



Electricity Distribution Licence

ED-2019-0128

Elexicon Energy Inc.

Valid Until

April 1, 2039

Brian Hewson

**Vice President, Consumer Protection & Industry Performance
Ontario Energy Board**

Date of Issuance: April 2, 2019

Date of Amendment: September 24, 2024

Ontario Energy Board
P.O. Box 2319
2300 Yonge Street
27th. Floor
Toronto, ON M4P 1E4

Commission de l'Énergie de l'Ontario
C.P. 2319
2300, rue Yonge
27e étage
Toronto ON M4P 1E4

LIST OF AMENDMENTS

| OEB File No. | Date of Amendment |
|---------------------|--------------------------|
| EB-2019-0167 | September 12, 2019 |
| EB-2020-0085 | March 2, 2020 |
| EB-2020-0185 | September 11, 2020 |
| EB-2020-0260 | January 14, 2021 |
| EB-2021-0124 | March 31, 2021 |
| EB-2021-0184 | June 30, 2021 |
| EB-2021-0323 | December 17, 2021 |
| EB-2024-0169 | July 4, 2024 |
| EB-2024-0228 | September 24, 2024 |

| | Table of Contents | Page No. |
|----|---|-----------------|
| 1 | Definitions | 1 |
| 2 | Interpretation | 2 |
| 3 | Authorization | 2 |
| 4 | Obligation to Comply with Legislation, Regulations and Market Rules | 2 |
| 5 | Obligation to Comply with Codes | 2 |
| 6 | Obligation to Provide Non-discriminatory Access | 3 |
| 7 | Obligation to Connect..... | 3 |
| 8 | Obligation to Sell Electricity | 4 |
| 9 | Obligation to Maintain System Integrity | 4 |
| 10 | Market Power Mitigation Rebates | 4 |
| 11 | Distribution Rates | 4 |
| 12 | Separation of Business Activities | 4 |
| 13 | Expansion of Distribution System | 4 |
| 14 | Provision of Information to the Board..... | 4 |
| 15 | Restrictions on Provision of Information | 5 |
| 16 | Customer Complaint and Dispute Resolution | 5 |
| 17 | Term of Licence | 6 |
| 18 | Fees and Assessments..... | 6 |
| 19 | Communication | 6 |

| | | |
|------------|---|----|
| 20 | Copies of the Licence..... | 6 |
| 21 | Conservation and Demand Management | 6 |
| 22 | Pole Attachments | 6 |
| 23 | Administration of COVID-19 Energy Support Program..... | 7 |
| 24 | Administration of COVID-19 Energy Support Program – Small Business..... | 9 |
| SCHEDULE 1 | DEFINITION OF DISTRIBUTION SERVICE AREA | 13 |
| SCHEDULE 2 | PROVISION OF STANDARD SUPPLY SERVICE | 14 |
| SCHEDULE 3 | LIST OF CODE EXEMPTIONS | 15 |
| APPENDIX A | MARKET POWER MITIGATION REBATES..... | 16 |

1 Definitions

In this Licence:

“**Accounting Procedures Handbook**” means the handbook, approved by the Board which specifies the accounting records, accounting principles and accounting separation standards to be followed by the Licensee;

“**Act**” means the *Ontario Energy Board Act, 1998*, S.O. 1998, c. 15, Schedule B;

“**Affiliate Relationships Code for Electricity Distributors and Transmitters**” means the code, approved by the Board which, among other things, establishes the standards and conditions for the interaction between electricity distributors or transmitters and their respective affiliated companies;

“**distribution services**” means services related to the distribution of electricity and the services the Board has required distributors to carry out, including the sales of electricity to consumers under section 29 of the Act, for which a charge or rate has been established in the Rate Order;

“**Distribution System Code**” means the code approved by the Board which, among other things, establishes the obligations of the distributor with respect to the services and terms of service to be offered to customers and retailers and provides minimum, technical operating standards of distribution systems;

“**Electricity Act**” means the *Electricity Act, 1998*, S.O. 1998, c. 15, Schedule A;

“**IESO**” means the Independent Electricity System Operator;

“**Licensee**” means Synergy North Corporation;

“**Market Rules**” means the rules made under section 32 of the Electricity Act;

“**OPA**” means the Ontario Power Authority;

“**Performance Standards**” means the performance targets for the distribution and connection activities of the Licensee as established by the Board in accordance with section 83 of the Act;

“**Rate Order**” means an Order or Orders of the Board establishing rates the Licensee is permitted to charge;

“**regulation**” means a regulation made under the Act or the Electricity Act;

“**Retail Settlement Code**” means the code approved by the Board which, among other things, establishes a distributor’s obligations and responsibilities associated with financial settlement among retailers and consumers and provides for tracking and facilitating consumer transfers among competitive retailers;

“**service area**” with respect to a distributor, means the area in which the distributor is authorized by its licence to distribute electricity;

“**Standard Supply Service Code**” means the code approved by the Board which, among other things, establishes the minimum conditions that a distributor must meet in carrying out its obligations to sell electricity under section 29 of the Electricity Act;

“**wholesaler**” means a person that purchases electricity or ancillary services in the IESO administered markets or directly from a generator or, a person who sells electricity or ancillary services through the IESO-administered markets or directly to another person other than a consumer.

2 Interpretation

- 2.1 In this Licence, words and phrases shall have the meaning ascribed to them in the Act or the Electricity Act. Words or phrases importing the singular shall include the plural and vice versa. Headings are for convenience only and shall not affect the interpretation of the Licence. Any reference to a document or a provision of a document includes an amendment or supplement to, or a replacement of, that document or that provision of that document. In the computation of time under this Licence, where there is a reference to a number of days between two events, they shall be counted by excluding the day on which the first event happens and including the day on which the second event happens and where the time for doing an act expires on a holiday, the act may be done on the next day that is not a holiday.

3 Authorization

- 3.1 The Licensee is authorized, under Part V of the Act and subject to the terms and conditions set out in this Licence:
- a) to own and operate a distribution system in the service area described in Schedule 1 of this Licence;
 - b) to retail electricity for the purposes of fulfilling its obligation under section 29 of the Electricity Act in the manner specified in Schedule 2 of this Licence; and
 - c) to act as a wholesaler for the purposes of fulfilling its obligations under the Retail Settlement Code or under section 29 of the Electricity Act.

4 Obligation to Comply with Legislation, Regulations and Market Rules

- 4.1 The Licensee shall comply with all applicable provisions of the Act and the Electricity Act and regulations under these Acts, except where the Licensee has been exempted from such compliance by regulation.
- 4.2 The Licensee shall comply with all applicable Market Rules.

5 Obligation to Comply with Codes

- 5.1 The Licensee shall at all times comply with the following Codes (collectively the “Codes”) approved by the Board, except where the Licensee has been specifically exempted from such

compliance by the Board. Any exemptions granted to the licensee are set out in Schedule 3 of this Licence. The following Codes apply to this Licence:

- a) the Affiliate Relationships Code for Electricity Distributors and Transmitters;
- b) the Distribution System Code;
- c) the Retail Settlement Code; and
- d) the Standard Supply Service Code.

5.2 The Licensee shall:

- a) make a copy of the Codes available for inspection by members of the public at its head office and regional offices during normal business hours; and
- b) provide a copy of the Codes to any person who requests it. The Licensee may impose a fair and reasonable charge for the cost of providing copies.

6 Obligation to Provide Non-discriminatory Access

6.1 The Licensee shall, upon the request of a consumer, generator or retailer, provide such consumer, generator or retailer with access to the Licensee's distribution system and shall convey electricity on behalf of such consumer, generator or retailer in accordance with the terms of this Licence.

7 Obligation to Connect

7.1 The Licensee shall connect a building to its distribution system if:

- a) the building lies along any of the lines of the distributor's distribution system; and
- b) the owner, occupant or other person in charge of the building requests the connection in writing.

7.2 The Licensee shall make an offer to connect a building to its distribution system if:

- a) the building is within the Licensee's service area as described in Schedule 1; and
- b) the owner, occupant or other person in charge of the building requests the connection in writing.

7.3 The terms of such connection or offer to connect shall be fair and reasonable and made in accordance with the Distribution System Code, and the Licensee's Rate Order as approved by the Board.

7.4 The Licensee shall not refuse to connect or refuse to make an offer to connect unless it is permitted to do so by the Act or a regulation or any Codes to which the Licensee is obligated to comply with as a condition of this Licence.

8 Obligation to Sell Electricity

- 8.1 The Licensee shall fulfill its obligation under section 29 of the Electricity Act to sell electricity in accordance with the requirements established in the Standard Supply Service Code, the Retail Settlement Code and the Licensee's Rate Order as approved by the Board.

9 Obligation to Maintain System Integrity

- 9.1 The Licensee shall maintain its distribution system in accordance with the standards established in the Distribution System Code and Market Rules, and have regard to any other recognized industry operating or planning standards adopted by the Board.

10 Market Power Mitigation Rebates

- 10.1 The Licensee shall comply with the pass through of Ontario Power Generation rebate conditions set out in Appendix A of this Licence.

11 Distribution Rates

- 11.1 The Licensee shall not charge for connection to the distribution system, the distribution of electricity or the retailing of electricity to meet its obligation under section 29 of the Electricity Act except in accordance with a Rate Order of the Board.

12 Separation of Business Activities

- 12.1 The Licensee shall keep financial records associated with distributing electricity separate from its financial records associated with transmitting electricity or other activities in accordance with the Accounting Procedures Handbook and as otherwise required by the Board.

13 Expansion of Distribution System

- 13.1 The Licensee shall not construct, expand or reinforce an electricity distribution system or make an interconnection except in accordance with the Act and Regulations, the Distribution System Code and applicable provisions of the Market Rules.
- 13.2 In order to ensure and maintain system integrity or reliable and adequate capacity and supply of electricity, the Board may order the Licensee to expand or reinforce its distribution system in accordance with Market Rules and the Distribution System Code, or in such a manner as the Board may determine.

14 Provision of Information to the Board

- 14.1 The Licensee shall maintain records of and provide, in the manner and form determined by the Board, such information as the Board may require from time to time.
- 14.2 Without limiting the generality of paragraph 14.1, the Licensee shall notify the Board of any material change in circumstances that adversely affects or is likely to adversely affect the business, operations or assets of the Licensee as soon as practicable, but in any event no more than twenty (20) days past the date upon which such change occurs.

15 Restrictions on Provision of Information

- 15.1 The Licensee shall not use information regarding a consumer, retailer, wholesaler or generator obtained for one purpose for any other purpose without the written consent of the consumer, retailer, wholesaler or generator.
- 15.2 The Licensee shall not disclose information regarding a consumer, retailer, wholesaler or generator to any other party without the written consent of the consumer, retailer, wholesaler or generator, except where such information is required to be disclosed:
- a) to comply with any legislative or regulatory requirements, including the conditions of this Licence;
 - b) for billing, settlement or market operations purposes;
 - c) for law enforcement purposes; or
 - d) to a debt collection agency for the processing of past due accounts of the consumer, retailer, wholesaler or generator.
- 15.3 The Licensee may disclose information regarding consumers, retailers, wholesalers or generators where the information has been sufficiently aggregated such that their particular information cannot reasonably be identified.
- 15.4 The Licensee shall inform consumers, retailers, wholesalers and generators of the conditions under which their information may be released to a third party without their consent.
- 15.5 If the Licensee discloses information under this section, the Licensee shall ensure that the information provided will not be used for any other purpose except the purpose for which it was disclosed.

16 Customer Complaint and Dispute Resolution

- 16.1 The Licensee shall:
- a) have a process for resolving disputes with customers that deals with disputes in a fair, reasonable and timely manner;
 - b) publish information which will make its customers aware of and help them to use its dispute resolution process;
 - c) make a copy of the dispute resolution process available for inspection by members of the public at each of the Licensee's premises during normal business hours;
 - d) give or send free of charge a copy of the process to any person who reasonably requests it; and
 - e) subscribe to and refer unresolved complaints to an independent third party complaints resolution service provider selected by the Board. This condition will become effective on a date to be determined by the Board. The Board will provide reasonable notice to the Licensee of the date this condition becomes effective.

17 Term of Licence

17.1 This Licence shall take effect on April 2, 2019 and expire on April 1, 2039. The term of this Licence may be extended by the Board.

18 Fees and Assessments

18.1 The Licensee shall pay all fees charged and amounts assessed by the Board.

19 Communication

19.1 The Licensee shall designate a person that will act as a primary contact with the Board on matters related to this Licence. The Licensee shall notify the Board promptly should the contact details change.

19.2 All official communication relating to this Licence shall be in writing.

19.3 All written communication is to be regarded as having been given by the sender and received by the addressee:

- a) when delivered in person to the addressee by hand, by registered mail or by courier;
- b) ten (10) business days after the date of posting if the communication is sent by regular mail; and
- c) when received by facsimile transmission by the addressee, according to the sender's transmission report.

20 Copies of the Licence

20.1 The Licensee shall:

- a) make a copy of this Licence available for inspection by members of the public at its head office and regional offices during normal business hours; and
- b) provide a copy of this Licence to any person who requests it. The Licensee may impose a fair and reasonable charge for the cost of providing copies.

21 Conservation and Demand Management

[Intentionally left blank]

22 Pole Attachments

22.1 The Licensee shall provide access to its distribution poles to all Canadian carriers, as defined by the Telecommunications Act, and to all cable companies that operate in the Province of Ontario. For each attachment, with the exception of wireless attachments, the Licensee shall charge the rate approved by the Board and included in the Licensee's tariff.

22.2 The Licensee shall:

- a) annually report the net revenue, and the calculations used to determine that net revenue, earned from allowing wireless attachments to its poles. Net revenues will be accumulated in a deferral account approved by the Board;
- b) credit that net revenue against its revenue requirement subject to Board approval in rate proceedings; and
- c) provide access for wireless attachments to its poles on commercial terms normally found in a competitive market.

23 Administration of COVID-19 Energy Support Program

23.1 For the purposes of paragraphs 23.1 to 23.8:

“Application Form” means the form of application for CEAP approved by the Board, including the use of that form by telephone

“CEAP” means the COVID-19 Energy Assistance Program as described in the Board’s Decision and Order dated June 16, 2020

“CEAP-eligible account” means an account in the Licensee’s residential class that meets all of the following criteria:

- (a) the account was in good standing (i.e. all amounts on account of electricity charges that were payable were fully paid) on March 17, 2020, and the account was not enrolled in an arrears payment for amounts owing prior to March 17, 2020
- (b) complete payment on account of electricity charges has not been made on at least two electricity bills issued since March 17, 2020, and the account has an Overdue Balance on the date of receipt of the Application Form for the account including where the account is enrolled in an arrears payment agreement for amounts incurred following March 17, 2020,
- (c) the account has not received funding under the Low-income Energy Assistance Program or the Ontario Electricity Support Program in 2020; and
- (d) the account holder has provided a complete Application Form and has declared, through the Application Form, that they or their spouse or common-law partner that resides in the same residence:
 - are unemployed on the date that they provide their completed Application Form to the Licensee
 - have received Employment Insurance or the Canada Emergency Response Benefit since March 17, 2020

“Overdue Balance” means the amount by which the account holder’s balance is past due in respect of Electricity Charges at the time the Application Form is received by the Licensee. Amounts that may be on the bill but are not yet past due are not part of the Overdue Balance.

“electricity charges” means:

- (a) charges that appear under the sub-headings “Electricity”, “Delivery”, and “Regulatory Charges” as described in Ontario Regulation 275/04 (Information on Invoices to Certain Classes of Consumers of Electricity) made under the Act, and all applicable taxes on those charges;
 - (b) where applicable, charges prescribed by regulations under section 25.33 of the Electricity Act and all applicable taxes on those charges
 - (c) Board-approved specific service charges, including late payment charges, and such other charges and applicable taxes associated with the consumption of electricity as may be required by law to be included on the bill issued to the customer or as may be designated by the Board for the purposes of this definition, but not including security deposits, amounts owed by a customer pursuant to a billing adjustment, or amounts under an arrears payment agreement entered into prior to March 17, 2020; and
 - (d) any financial assistance provided for under the *Ontario Rebate for Electricity Consumers Act, 2016*
- 23.2 The Licensee shall start to accept Application Forms as of July 13, 2020.
- 23.3 The Licensee shall:
- (a) Make copies of the Application Form available on its web site and to any customer on request.
 - (b) Process all complete Application Forms in the order in which they are received.
 - (c) Accept Application Forms by e-mail or mail, and may also allow the Application Form to be completed online or by telephone, provided that where Application Forms are completed by telephone the call must be recorded and must document confirmation of all information requested on the Application Form, including consent and the applicant’s declaration of eligibility.
 - (d) Process each complete Application Form within 10 business days of receipt.
- 23.4 The Licensee shall provide a credit to a CEAP-eligible account in an amount equal to half of the Overdue Balance for the account:
- (a) to a maximum of \$230, where the Application Form declares that the account is for a residence that mainly uses electric heating or in which an eligible medical device is used
 - (b) to a maximum of or \$115, in all other cases.
- 23.5 The credit must be applied on the next bill issued to the CEAP-eligible account after the processing of the Application Form for the account as set out in paragraph 23.3(d), where feasible, and in any event no later than on the following bill.
- 23.6 Despite paragraph 23.4:

- (a) The Licensee is not required to provide a credit to a CEAP-eligible account if the total amount of CEAP funding available to the Licensee as specified by the Board has been expended; and
 - (b) The Licensee shall not provide a credit to a CEAP-eligible account more than once.
- 23.7 Reimbursement for credits provided by the Licensee to CEAP-eligible accounts, up to the total referred to in paragraph 23.5(a), are recoverable from the Independent Electricity System Operator. The Licensee shall provide information in such form and manner, and within such time, as the IESO may reasonably require, in respect of requests for reimbursement. The Licensee shall not seek reimbursement from the Independent Electricity System Operator for any amount above the total referred to in paragraph 23.5(a) or on account of any costs relating to the administration of CEAP.
- 23.8 The Licensee shall keep the following records for two years, and make them available to the Board upon request:
- (a) Copies of all Application Forms received, including recordings of calls where the Application Form is provided by telephone, and copies of any communications with customers about CEAP.
 - (b) A record of all Application Forms that were accepted as complete and a credit was provided to CEAP-eligible accounts, and a record of all Application Forms that were denied
 - (c) A record of the credit provided to each CEAP-eligible account, as well as the total amount of credits provided to all CEAP-eligible accounts.
- 23.9 The Licensee shall report to the Board, as soon as practicable, the date on which the total amount of CEAP funding referred to in paragraph 23.5(a) has been expended.
- 23.10 Paragraphs 23.1 to 23.8 govern over any provisions of the Distribution System Code or the Standard Supply Service Code in the event of any inconsistency.

24 Administration of COVID-19 Energy Support Program – Small Business

24.1 For the purposes of paragraphs 24.1 to 24.8:

“Application Form” means the form of application for CEAP-SB approved by the Board, including the use of that form by telephone

“CEAP-SB” means the COVID-19 Energy Assistance Program – Small Business as described in the Board’s Decision and Order dated August 7, 2020

“CEAP-SB eligible account” means an account for premises in the Licensee’s GS<50 class (for electricity distributors) / relevant commercial class and whose annual usage is less than 150,000 kWh (for USMPs) that meets all of the following criteria:

- a) the account holder has a registered business number or charitable registration number for the business or registered charity operating out of the premises,

- b) the account was in good standing (i.e. all amounts on account of electricity charges that were payable were fully paid) on March 17, 2020, and the account was not enrolled in an arrears payment agreement for amounts owing prior to March 17, 2020,
- c) complete payment on account of electricity charges has not been made on at least two electricity bills issued since March 17, 2020, and the account has an Overdue Balance on the date of receipt of the Application Form for the account including where the account is enrolled in an arrears payment agreement for amounts incurred following March 17, 2020,
- d) the account holder has confirmed in the Application Form that it is not applying for a CEAP-SB credit for another location or electricity account anywhere in the Province of Ontario for the same small business or registered charity,
- e) the account holder has provided a complete Application Form and has declared, through the Application Form, that their small business or registered charity's premises was required to close to the public for regular operations for at least 15 days as a result of a government order or inability to comply with public health recommendations.

Note that the Licensee is only required to verify the information in items (b), (c), and (e) above.

"electricity charges" means:

- a) charges that appear under the sub-headings "Electricity", "Delivery", and "Regulatory Charges" as described in Ontario Regulation 275/04 (Information on Invoices to Certain Classes of Consumers of Electricity) made under the Act, and all applicable taxes on those charges;
- b) where applicable, charges prescribed by regulations under section 25.33 of the Electricity Act and all applicable taxes on those charges
- c) Board-approved specific service charges, including late payment charges, and such other charges and applicable taxes associated with the consumption of electricity as may be required by law to be included on the bill issued to the customer or as may be designated by the Board for the purposes of this definition, but not including security deposits, amounts owed by a customer pursuant to a billing adjustment, or amounts under a payment agreement entered into prior to March 17, 2020; and
- d) any financial assistance provided for under the *Ontario Rebate for Electricity Consumers Act, 2016*; and

"Overdue Balance" means the amount by which the account holder's balance is past due in respect of Electricity Charges at the time the Application Form is received by the Licensee. Amounts that may be on the bill but are not yet past due are not part of the Overdue Balance.

24.2 The Licensee shall start to accept Application Forms as of August 31, 2020.

24.3 The Licensee shall:

- a) Make copies of the Application Form available on its web site and to any customer on request.
 - b) Process all complete Application Forms in the order in which they are received.
 - c) Accept Application Forms by e-mail or mail, and may also allow the Application Form to be completed online or by telephone, provided that where Application Forms are completed by telephone the call must be recorded and must document confirmation of all information requested on the Application Form, including consent and the applicant's declaration of eligibility.
 - d) Process each complete Application Form within 10 business days of receipt.
- 24.4 The Licensee shall provide a credit to a CEAP-SB eligible account up to the amount of the Overdue Balance for the account:
- a) to a maximum of \$850, where the Application Form declares that the account is for small business or registered charity premises that primarily uses electricity for heating; or
 - b) to a maximum of or \$425, in all other cases.
- The credit must be applied on the next bill issued to the CEAP-SB eligible account after the processing of the Application Form for the account as set out in paragraph 24.3(d), where feasible, and in any event no later than on the following bill.
- 24.5 Despite paragraph 24.4:
- a) The Licensee is not required to provide a credit to a CEAP-SB eligible account if the total amount of CEAP-SB funding available to the Licensee as specified by the Board has been expended; and
 - b) The Licensee shall not provide a credit to a CEAP-SB eligible account more than once.
- 24.6 Reimbursement for credits provided by the Licensee to CEAP-SB eligible accounts, up to the total referred to in paragraph 24.5(a), are recoverable from the Independent Electricity System Operator. The Licensee shall provide information in such form and manner, and within such time, as the IESO may reasonably require, in respect of requests for reimbursement. The Licensee shall not seek reimbursement from the Independent Electricity System Operator for any amount above the total referred to in paragraph 24.5(a) or on account of any costs relating to the administration of CEAP-SB.
- 24.7 The Licensee shall keep the following records for two years, and make them available to the Board upon request:
- a) Copies of all Application Forms received, including recordings of calls where the Application Form is provided by telephone, and copies of any communications with customers about CEAP-SB.

- b) A record of all Application Forms that were accepted as complete and a credit was provided to CEAP-SB eligible accounts, and a record of all Application Forms that were denied.
 - c) A record of the credit provided to each CEAP-SB eligible account, as well as the total amount of credits provided to all CEAP-SB eligible accounts.
- 24.8 The Licensee shall report to the Board, as soon as practicable, the date on which the total amount of CEAP-SB funding referred to in paragraph 24.5(a) has been expended.
- 24.9 Paragraphs 24.1 to 24.8 govern over any provisions of the Distribution System Code or the Standard Supply Service Code in the event of any inconsistency.

SCHEDULE 1 DEFINITION OF DISTRIBUTION SERVICE AREA

This Schedule specifies the area in which the Licensee is authorized to distribute and sell electricity in accordance with paragraph 8.1 of this Licence.

The Licensee's service area is comprised of the distribution service areas of the former Veridian Connections Inc. (ED-2002-0503) and Whitby Hydro Electric Corporation (ED-2002-0571) as they existed at the date of the completion of their amalgamation, as approved by the OEB in its Decision and Order in OEB File No. EB-2018-0236. The service areas of these predecessor distributors are referred to as Rate Zones for the purposes of this Licence and for the purposes of the Rate Orders assigned to LDC Mergeco as part of the OEB's Decision and Order in EB-2018-0236.

The Veridian Connections Rate Zone:

See Appendix B for Service Area listing.

The Whitby Hydro Rate Zone:

1. 1. The Town of Whitby as at January 1, 1968, except for:
 - (a) the following lands which are included in the Veridian Connections Rate Zone:
 - Broken Front Concession, Part Lot 34, 2.00 AC;
 - Broken Front Concession, Part Lot 35, now RP 40R7831, Part 1 Regulator 0.04AC 32.81FR 49.21D;
 - Concession 6, Part Lot 35, 9.47AC;
 - Concession 8, Part Lot 34, 35.55AC;
 - Concession 8, Part Lot 34, 35, now RP 40R7371, Part 1, 56.50 AC;
 - Concession 8, Part Lot 34, 35; and
 - Concession 9, Part Lot 35 and Part of Road Allowance, now RP 40R13254, Part 1 205.57 AC.
 - (b) the following lands which are served by Hydro One Networks Inc.:
 - Concession 9, part lots 21 – 26, and 31 – 33 with civic address numbers 165, 275, 345, 365, 395, 425, 445, 465, 485, 525, 545, 565, 585, 605, 625, 665, 675, 1175, 1245, 1375, 1395 on Townline Road West;
 - Concession 9, part lot 26 with civic address 995 Ashburn Road North;
 - Concession 9, part lot 34 with civic address 9909 Dagmar Road;
 - Concession 9, part lot 35 with civic address numbers 9685, 9695, 9885, 9895 on Lake Ridge Road.

SCHEDULE 2 PROVISION OF STANDARD SUPPLY SERVICE

This Schedule specifies the manner in which the Licensee is authorized to retail electricity for the purposes of fulfilling its obligation under section 29 of the Electricity Act.

1. The Licensee is authorized to retail electricity directly to consumers within its service area in accordance with paragraph 8.1 of this Licence, any applicable exemptions to this Licence, and at the rates set out in the Rate Orders.

SCHEDULE 3 LIST OF CODE EXEMPTIONS

This Schedule specifies any specific Code requirements from which the Licensee has been exempted.

1. Licensee is exempt from the requirements of section 2.5.3 of the Standard Supply Service Code with respect to the price for small volume/residential consumers, subject to the Licensee offering an equal billing plan as described in its application for exemption from Fixed Reference Price, and meeting all other undertakings and material representations contained in the application and the materials filed in connection with it.

2. The Licensee is exempt from the requirements of section 5.1.3(b) of the Distribution System Code. This exemption expires on December 31, 2022 or on the date the Licensee completes installation of all its MIST meters, whichever is earlier.

APPENDIX A

MARKET POWER MITIGATION REBATES

1. Definitions and Interpretations

In this Licence

“embedded distributor” means a distributor who is not a market participant and to whom a host distributor distributes electricity;

“embedded generator” means a generator who is not a market participant and whose generation facility is connected to a distribution system of a distributor, but does not include a generator who consumes more electricity than it generates;

“host distributor” means a distributor who is a market participant and who distributes electricity to another distributor who is not a market participant.

In this Licence, a reference to the payment of a rebate amount by the IESO includes interim payments made by the IESO.

2. Information Given to IESO

- a Prior to the payment of a rebate amount by the IESO to a distributor, the distributor shall provide the IESO, in the form specified by the IESO and before the expiry of the period specified by the IESO, with information in respect of the volumes of electricity withdrawn by the distributor from the IESO-controlled grid during the rebate period and distributed by the distributor in the distributor’s service area to:
 - i consumers served by a retailer where a service transaction request as defined in the Retail Settlement Code has been implemented; and
 - ii consumers other than consumers referred to in clause (i) who are not receiving the fixed price under sections 79.4, 79.5 and 79.16 of the *Ontario Energy Board Act, 1998*.

- b Prior to the payment of a rebate amount by the IESO to a distributor which relates to electricity consumed in the service area of an embedded distributor, the embedded distributor shall provide the host distributor, in the form specified by the IESO and before the expiry of the period specified in the Retail Settlement Code, with the volumes of electricity distributed during the rebate period by the embedded distributor’s host distributor to the embedded distributor net of any electricity distributed to the embedded distributor which is attributable to embedded generation and distributed by the embedded distributor in the embedded distributor’s service area to:
 - i consumers served by a retailer where a service transaction request as defined in the Retail Settlement Code has been implemented; and
 - ii consumers other than consumers referred to in clause (i) who are not receiving the fixed price under sections 79.4, 79.5 and 79.16 of the *Ontario Energy Board Act, 1998*.

- c Prior to the payment of a rebate amount by the IESO to a distributor which relates to electricity

consumed in the service area of an embedded distributor, the host distributor shall provide the IESO, in the form specified by the IESO and before the expiry of the period specified by the IESO, with the information provided to the host distributor by the embedded distributor in accordance with section 2.

The IESO may issue instructions or directions providing for any information to be given under this section. The IESO shall rely on the information provided to it by distributors and there shall be no opportunity to correct any such information or provide any additional information and all amounts paid shall be final and binding and not subject to any adjustment.

For the purposes of attributing electricity distributed to an embedded distributor to embedded generation, the volume of electricity distributed by a host distributor to an embedded distributor shall be deemed to consist of electricity withdrawn from the IESO-controlled grid or supplied to the host distributor by an embedded generator in the same proportion as the total volume of electricity withdrawn from the IESO-controlled grid by the distributor in the rebate period bears to the total volume of electricity supplied to the distributor by embedded generators during the rebate period.

3. Pass Through of Rebate

A distributor shall promptly pass through, with the next regular bill or settlement statement after the rebate amount is received, any rebate received from the IESO, together with interest at the Prime Rate, calculated and accrued daily, on such amount from the date of receipt, to:

- a retailers who serve one or more consumers in the distributor's service area where a service transaction request as defined in the Retail Settlement Code has been implemented;
- b consumers who are not receiving the fixed price under sections 79.4, 79.5 and 79.16 of the *Ontario Energy Board Act, 1998* and who are not served by a retailer where a service transaction request as defined in the Retail Settlement Code has been implemented; and
- c embedded distributors to whom the distributor distributes electricity.

The amounts paid out to the recipients listed above shall be based on energy consumed and calculated in accordance with the rules set out in the Retail Settlement Code. These payments may be made by way of set off at the option of the distributor.

If requested in writing by OPGI, the distributor shall ensure that all rebates are identified as coming from OPGI in the following form on or with each applicable bill or settlement statement:

"ONTARIO POWER GENERATION INC. rebate"

Any rebate amount which cannot be distributed as provided above or which is returned by a retailer to the distributor in accordance with its licence shall be promptly returned to the host distributor or IESO as applicable, together with interest at the Prime Rate, calculated and accrued daily, on such amount from the date of receipt.

Nothing shall preclude an agreement whereby a consumer assigns the benefit of a rebate payment to a retailer or another party.

Pending pass-through or return to the IESO of any rebate received, the distributor shall hold the funds received in trust for the beneficiaries thereof in a segregated account.

ONTARIO POWER GENERATION INC. REBATES

For the payments that relate to the period from May 1, 2006 to April 30, 2009, the rules set out below shall apply.

1. Definitions and Interpretations

In this Licence

“embedded distributor” means a distributor who is not a market participant and to whom a host distributor distributes electricity;

“embedded generator” means a generator who is not a market participant and whose generation facility is connected to a distribution system of a distributor, but does not include a generator who consumes more electricity than it generates;

“host distributor” means a distributor who is a market participant and who distributes electricity to another distributor who is not a market participant.

In this Licence, a reference to the payment of a rebate amount by the IESO includes interim payments made by the IESO.

2. Information Given to IESO

- a Prior to the payment of a rebate amount by the IESO to a distributor, the distributor shall provide the IESO, in the form specified by the IESO and before the expiry of the period specified by the IESO, with information in respect of the volumes of electricity withdrawn by the distributor from the IESO-controlled grid during the rebate period and distributed by the distributor in the distributor’s service area to:
 - i consumers served by a retailer where a service transaction request as defined in the Retail Settlement Code has been implemented and the consumer is not receiving the prices established under sections 79.4, 79.5 and 79.16 of the *Ontario Energy Board Act, 1998*; and
 - ii consumers other than consumers referred to in clause (i) who are not receiving the fixed price under sections 79.4, 79.5 and 79.16 of the *Ontario Energy Board Act, 1998*.
- b Prior to the payment of a rebate amount by the IESO to a distributor which relates to electricity consumed in the service area of an embedded distributor, the embedded distributor shall provide the host distributor, in the form specified by the IESO and before the expiry of the period specified in the Retail Settlement Code, with the volumes of electricity distributed during the rebate period by the embedded distributor’s host distributor to the embedded distributor net of any electricity distributed to the embedded distributor which is attributable to embedded generation and distributed by the embedded distributor in the embedded distributor’s service area to:

- i consumers served by a retailer where a service transaction request as defined in the Retail Settlement Code has been implemented; and
 - ii consumers other than consumers referred to in clause (i) who are not receiving the fixed price under sections 79.4, 79.5 and 79.16 of the *Ontario Energy Board Act, 1998*.
- c Prior to the payment of a rebate amount by the IESO to a distributor which relates to electricity consumed in the service area of an embedded distributor, the host distributor shall provide the IESO, in the form specified by the IESO and before the expiry of the period specified by the IESO, with the information provided to the host distributor by the embedded distributor in accordance with section 2.

The IESO may issue instructions or directions providing for any information to be given under this section. The IESO shall rely on the information provided to it by distributors and there shall be no opportunity to correct any such information or provide any additional information and all amounts paid shall be final and binding and not subject to any adjustment.

For the purposes of attributing electricity distributed to an embedded distributor to embedded generation, the volume of electricity distributed by a host distributor to an embedded distributor shall be deemed to consist of electricity withdrawn from the IESO-controlled grid or supplied to the host distributor by an embedded generator in the same proportion as the total volume of electricity withdrawn from the IESO-controlled grid by the distributor in the rebate period bears to the total volume of electricity supplied to the distributor by embedded generators during the rebate period.

3. Pass Through of Rebate

A distributor shall promptly pass through, with the next regular bill or settlement statement after the rebate amount is received, any rebate received from the IESO, together with interest at the Prime Rate, calculated and accrued daily, on such amount from the date of receipt, to:

- a retailers who serve one or more consumers in the distributor's service area where a service transaction request as defined in the Retail Settlement Code has been implemented and the consumer is not receiving the prices established under sections 79.4, 79.5 and 79.16 of the *Ontario Energy Board Act, 1998*;
- b consumers who are not receiving the fixed price under sections 79.4, 79.5 and 79.16 of the *Ontario Energy Board Act, 1998* and who are not served by a retailer where a service transaction request as defined in the Retail Settlement Code has been implemented; and
- c embedded distributors to whom the distributor distributes electricity.

The amounts paid out to the recipients listed above shall be based on energy consumed and calculated in accordance with the rules set out in the Retail Settlement Code. These payments may be made by way of set off at the option of the distributor.

If requested in writing by OPGI, the distributor shall ensure that all rebates are identified as coming from OPGI in the following form on or with each applicable bill or settlement statement:

“ONTARIO POWER GENERATION INC. rebate”

Any rebate amount which cannot be distributed as provided above or which is returned by a retailer to the distributor in accordance with its licence shall be promptly returned to the host distributor or IESO as applicable, together with interest at the Prime Rate, calculated and accrued daily, on such amount from the date of receipt.

Nothing shall preclude an agreement whereby a consumer assigns the benefit of a rebate payment to a retailer or another party.

Pending pass-through or return to the IESO of any rebate received, the distributor shall hold the funds received in trust for the beneficiaries thereof in a segregated account.

**Schedule 1 definition of Distribution Service Area
of Elexicon Energy Inc. - Veridian Connections
Rate Zone**

This Schedule specifies the area in which the Licensee is authorized to distribute and sell electricity in accordance with condition 8.1 of this Licence.

Index

| Service Area Descriptions | Page |
|---|-------------|
| AJAX/PICKERING SERVICE AREA | 2 |
| BELLEVILLE SERVICE AREA | 7 |
| BROCK – BEAVERTON SERVICE AREA | 10 |
| BROCK – CANNINGTON SERVICE AREA | 12 |
| BROCK – SUNDERLAND SERVICE AREA | 14 |
| CLARINGTON – BOWMANVILLE SERVICE AREA..... | 16 |
| CLARINGTON – NEWCASTLE SERVICE AREA..... | 18 |
| CLARINGTON – ORONO SERVICE AREA..... | 20 |
| GRAVENHURST SERVICE AREA | 21 |
| PORT HOPE SERVICE AREA | 23 |
| SCUGOG SERVICE AREA | 24 |
| UXBRIDGE SERVICE AREA | 27 |
| | |
| Reference Maps | |
| Ajax – Pickering Veridian Territory | 30 |
| Belleville Veridian Territory | 31 |
| Beaverton Veridian Territory..... | 32 |
| Cannington Veridian Territory..... | 33 |
| Brock Veridian Territory | 34 |
| Clarington - Bowmanville Veridian Territory | 35 |
| Clarington – New Castle Veridian Territory | 36 |
| Orono Veridian Territory | 37 |
| Gravenhurst Veridian Territory | 38 |
| Port Hope Veridian Territory | 39 |
| Port Perry (Scugog) Veridian Territory | 40 |
| Uxbridge Veridian Territory..... | 41 |

**Schedule 1 definition of Distribution Service Area
of Elexicon Energy Inc. - Veridian Connections
Rate Zone**

This Schedule specifies the area in which the Licensee is authorized to distribute and sell electricity in accordance with condition 8.1 of this Licence.

AJAX/PICKERING SERVICE AREA

The alpha-numeric point numbers below refer to the reference map provided on page 30 of this document.

WESTERN BOUNDARY

1. Point #1 is located at the mouth of the Rouge River. The boundary proceeds in a north-westerly direction along the Rouge River to where it intersects with the straight-line projection of the York-Durham Town Line.

- 1A. Point # 1A located at the intersection of the Rouge River and the straight-line projection of the York-Durham Town Line. The boundary continues north to point # 2 with the exception of the excursions noted in the tables below. Veridian points 1B to 1H are seven excursions taking in the six registered parcels of land and one streetlight installation as detailed in the following table. These seven excursions are to be included in Veridian Connections Rate Zone Service Area.

| Veridian Point No. | Municipal Address, Town of Markham | Legal Description |
|---------------------------|---|--|
| 1B | 7917 Major Mackenzie Drive E | Lot 20, Con. 10, Markham, as in MA80925 |
| 1C | 9992 York-Durham Town Line | Lot 20, Con. 10, Markham, as in MA80925 |
| 1D | 11410 York-Durham Town Line | Lot 29, Con. 10, Markham; Lot 30, Con. 10, Markham |
| 1E | 11584 York-Durham Town Line | Pt. Lot 31, Con. 10, Markham, Pt. 1, 65R-20217 |
| 1F | 11290 York-Durham Town Line | Lot 29, Con. 10, Markham, Lot 30, Con. 10, Markham |
| 1G | 11350 York-Durham Town Line | Lot 29, Con. 10, Markham, Lot 30, Con. 10, Markham |
| 1H | Streetlight at Major Mackenzie Drive East and York-Durham Town Line | Not applicable |

Appendix B**Schedule 1 definition of Distribution Service Area
of Elexicon Energy Inc. - Veridian Connections
Rate Zone**

This Schedule specifies the area in which the Licensee is authorized to distribute and sell electricity in accordance with condition 8.1 of this Licence.

Page 3 of 41

Points 1J to 1K are two excursions taking in the two registered parcels of land as detailed in the following table. These two excursions are to be excluded from Veridian Connections Rate Zone Service Area.

| Veridian Point No. | Municipal Address, City of Pickering | Legal Description |
|---------------------------|---|---|
| 1J | 5293 York-Durham Town Line | Pt. Lot 35, Con 9 Pickering, Pt. 1, 40R-18594 |
| 1K | 5295 York-Durham Town Line | Pt. Lot 35, Con 9 Pickering, Pt. 1, 40R-18594 |

**Schedule 1 definition of Distribution Service Area
of Elexicon Energy Inc. - Veridian Connections
Rate Zone**

This Schedule specifies the area in which the Licensee is authorized to distribute and sell electricity in accordance with condition 8.1 of this Licence.

NORTHERN BOUNDARY

2. Point # 2 is located at the intersection of the York-Durham Town Line and the Uxbridge Pickering Town Line also known as the 10th Concession Road Allowance. The boundary turns easterly and follows in a straight line along this Town Line/Road Allowance to Point #3 with the exception of the excursions noted in the tables below. Veridian points 2A to 2H are eight excursions taking in the eight registered parcels of land as detailed in the following table. These eight excursions are to be included in Veridian Connections Rate Zone Service Area.

| Veridian Point No. | Municipal Address, City of Pickering | Legal Description |
|---------------------------|---|--|
| 2A | 132 Uxbridge Pickering Town Line | Part Lot 1, Con. 1 Uxbridge, Pts. 1, 2 & 3, 40R-11119 |
| 2B | 152 Uxbridge Pickering Town Line | Part Lot 1, Con. 1 Uxbridge as in D526884 |
| 2C | 160 Uxbridge Pickering Town Line | Part Lot 1, Con. 1 Uxbridge as in D94345 |
| 2D | 168 Uxbridge Pickering Town Line | Part Lot 1, Con. 1 Uxbridge, as in D528307 |
| 2E | 174 Uxbridge Pickering Town Line | Part Lots 1 & 2, Con. Uxbridge, as in D160902 |
| 2F | 176 Uxbridge Pickering Town Line | Pt. Lots 1 & 2, Con 1 Uxbridge, Pts. 1 & 2, 40R-5246 |
| 2G | 190 Uxbridge Pickering Town Line | Pt. Lots 1, 2, 3, 4 & 5, Con. 1, Uxbridge, Pt. 1, 40R-5742 |
| 2H | 192 Uxbridge Pickering Town Line | Pt. Lots 1, 2, 3, 4 & 5, Con. 1, Uxbridge, Pt. 1, 40R-5742 |

Veridian points 2J to 2Q are 8 excursions taking in the 8 registered parcels of land as detailed in the following table. These seven excursions are to be excluded from Veridian Connections Rate Zone Service Area.

| Veridian Point No. | Municipal Address, City of Pickering | Legal Description |
|---------------------------|---|--|
| 2J | 1775 Uxbridge Pickering Town Line | Pt. Lot 18, Con 9 Pickering, as in D468835 |
| 2K | 1935 Uxbridge Pickering Town Line | Pt. Lot 18, Con 9 Pickering, as in D468835 |
| 2L | 1995 Uxbridge Pickering Town Line | Pt. Lots 15 & 16, Con 9 Pickering, Pts. 1, 2, 4 & 5, 40R-24662 |

**Schedule 1 definition of Distribution Service Area
of Elexicon Energy Inc. - Veridian Connections
Rate Zone**

This Schedule specifies the area in which the Licensee is authorized to distribute and sell electricity in accordance with condition 8.1 of this Licence.

| | | |
|----|-----------------------------------|---|
| 2M | 2045 Uxbridge Pickering Town Line | Pt. Lot 15, Con. 9 Pickering |
| 2N | 2195 Uxbridge Pickering Town Line | Pt. Lot 14, Con 9 Pickering as in D203854 |
| 2O | 2265 Uxbridge Pickering Town Line | Pt. of N Pt. Lot 13, Con 9, Pickering as in D430754 |
| 2P | 2455 Uxbridge Pickering Town Line | Pt. Lot 11, Con 9 Pickering, as in D415868 |
| 2Q | 5495 Westney Road | Pt. Lot 10, Con 9 Pickering, Pt. 1, 40R-8662 |

EASTERN BOUNDARY

3. Point # 3 is located at the intersection of Uxbridge Pickering / Town Line and Lakeridge Road. The boundary turns southerly and follows Lakeridge Road to Point #11, with the exception of seven excursions taking in the six registered parcels of land as detailed in the following table: These seven excursions are to be included in Veridian Connections Rate Zone Service Area.

| Veridian Point No. | Municipal Address, Town of Whitby | Legal Description |
|---------------------------|--|---|
| 4 | 8875 Lakeridge Road | Concession 8, Part Lot 34, 35 and Concession 9, Part Lot 35 and Part of Road Allowance Now RP 40R13254, Part 1 205.57AC |
| 5 | 8405 Lakeridge Road | Concession 8, Part Lot 34, 35 Now RP 40R7371, Part 1, 56.50AC |
| 6 | 8195 Lakeridge Road | Concession 8, Part Lot 34, 35.55AC |
| 7 | 6605 Lakeridge Road | Concession 6, Part Lot 35, 9.47AC |
| 8 and 9 | 605 Lakeridge Road South | Broken Front Concession, Part Lot 35, Now RP 40R7831, Part 1 Regulator 0.04AC 32.81FR 49.21D |
| 10 | 715 Halls Road | Broken Front Concession, Part Lot 34, 2.00AC |

**Schedule 1 definition of Distribution Service Area
of Elexicon Energy Inc. - Veridian Connections
Rate Zone**

This Schedule specifies the area in which the Licensee is authorized to distribute and sell electricity in accordance with condition 8.1 of this Licence.

Veridian points 3A to 3E are five excursions taking in the 4 registered parcels of land and one billboard as detailed in the following table. These five excursions are to be excluded from Veridian Connections Rate Zone Service Area.

| Veridian Point No. | Municipal Address, City of Pickering | Legal Description |
|---------------------------|---|---|
| 3A | 5450 Lakeridge Road | Pt. Lot 1, Con 9 Pickering; Pt. N1/2 Lot A, Con. 9, Pickering, as in D464935. |
| 3B | 5420 Lakeridge Road | Pt. Lot 1, Con 9 Pickering; Pt. N1/2 Lot A, Con. 9, Pickering, as in D464935. |
| 3C | 5240 Lakeridge Road | Pt. Lot 1, Con 9 Pickering; Pt. N1/2 Lot A, Con. 9, Pickering, Pts. 1 & 3. 40R-8746 |
| 3D | 5150 Lakeridge Road | Pt. S1/2 Lot A, Con 9, Pickering, Pt. 1, 40R-5620 |
| 3E | Billboard N of 5240 Lakeridge Road | Not applicable |

SOUTHERN BOUNDARY

- Point # 11 is at Lakeridge Road and Lake Ontario. The boundary turns westerly following the Lake Ontario frontage to Point #1.

Schedule 1 definition of Distribution Service Area of Elexicon Energy Inc. - Veridian Connections Rate Zone

This Schedule specifies the area in which the Licensee is authorized to distribute and sell electricity in accordance with condition 8.1 of this Licence.

BELLEVILLE SERVICE AREA

The alpha-numeric point numbers below refer to the reference map provided on page 31 of this document.

WESTERN BOUNDARY

1. The western boundary of the existing Belleville Service Area starts at point #1 which is located at the Bay of Quinte, 0.1 km west of Avondale Road. The boundary continues parallel to Avondale Road to point #2, with the exception of an additional contiguous parcel extending to the west of Belleville, County of Hastings (476 Dundas Street West - Hastings County Manor).
2. Point #2 is located 0.1 km south of Harder Drive at the north-west corner of 180 Avondale Road. The boundary turns east following the north lot line of 180 and 179 Avondale Road and the south lot line of 67 Harder Drive to point #3.
3. Point #3 is located at the south-east corner of 67 Harder Drive. The boundary then turns north following the west lot line of 44 Glen Road to point #4.
4. Point #4 is located at the north-west corner of 44 Glen Road. The boundary then turns east following the north lot line of 44 and 45 Glen Road and 200 Wright Avenue to point #5.
5. Point #5 is located at the north-east corner of 200 Wright Avenue. The boundary then turns north following the west and north lot lines of 36 Harder Drive and the east lot lines of 62, 64, 66, 68, 72, 76 Kensington Crescent and the west lot lines of 2 and 4 Haslett Court to point #6.
6. Point #6 is located at the north-west corner of 4 Haslett Court. The boundary turns east following the north lot lines of 4, 6, 8 Haslett Court and 8, 10, 12 Wilmot Court to point #7.
7. Point #7 is located at the north-east corner of 12 Wilmot Court. The boundary then turns north following the west lot lines of 19, 21, 23 Benson Court, plus west lot lines of 29, 31, 33, 35, 37, 39, 41, 43, 45 Sherwood Court, plus the west lot lines of 29, 31, 33, 35, 37, 39, 41, 43, 45 Bogart Crescent to Point #8.
8. Point #8 is located at the north-west corner of 45 Bogart Crescent. The boundary then turns east following the north lot lines of 47, 49, 51, 53, 55, 57, 59, 61, 63, 65, 67, 69 Bogart Crescent, crosses Palmer Road and continues east for approximately 0.19km to point #9.
9. Point #9 is located approximately 0.19 km east of Palmer Road. The boundary then turns north at this point following the west lot line of 40 Wilson Avenue and the west lot line of 39 Pepper Avenue for approximately 0.23 km to point #10.
10. Point #10 is located at the south-east corner of 4 Lake Court. The boundary then turns west, following the south lot lines of 4, 6, 8 Lake Court for approximately 0.05 km to point #11.
11. Point #11 is located at the south-west corner of 8 Lake Court. The boundary then turns north following the west lot lines of 10, 12, 14 Lake Court and 337 Moira Street West for approximately 0.16 km to point #12.

**Schedule 1 definition of Distribution Service Area
of Elexicon Energy Inc. - Veridian Connections
Rate Zone**

This Schedule specifies the area in which the Licensee is authorized to distribute and sell electricity in accordance with condition 8.1 of this Licence.

12. Point #12 is located at the south lot line of 9 Jeanette Place. The boundary then turns west following the south lot line of 9 and 11 Jeanette Place and 8, 10, 12 Dixie Place for approximately 0.14 km to point #13.
13. Point #13 is located at the south-west corner of 12 Dixie Place. Included in the service area is an excursion which includes the parcel of land at 458 Moira Street W. The boundary then turns north following the west lot lines of 12, 14 and 16 Dixie Place, 135 and 136 Progress Avenue, 291 and 290 College Street West, 16, 18, 20, 22, 24, 26, 28, 30, 32 Beverley Crescent and 1 Robert Drive; then the west lot lines of 129, 126, 124, 122, 120, 118, 116, 114, 112, 110, 108, 106, 104, 102, 100, 98, 96, 94, 92, 90, 88, 86, 84, 82, 80, 78 Tracey Park Drive and 2, 4, 6, 8, 10 Queensboro Court, and north to point #14, located approximately 0.7 km west of Sidney Street at the north edge of Bell Boulevard.
14. Point #14 is located approximately 0.7 km west of Sidney Street at the north edge of Bell Boulevard. The boundary then turns west following the north edge of Bell Boulevard for approximately 0.39 km to point # 15.
15. Point # 15 is located at the south-west corner of a parcel of property addressed as 380 Bell Boulevard and known as Part Lot 32-36, Concession 2 in the City of Quinte West, Hastings County Plan 21-R-24570 parts 1 & 3. The boundary follows the western edge of this parcel of land north to the south edge of Highway # 401 to point # 16.

NORTHERN BOUNDARY

16. Point #16 is located approximately 1.0 km west of Sidney Street at Highway # 401. The boundary turns east following the southern boundary of Highway #401 road allowance for approximately 6.7 km to point #17.

EASTERN BOUNDARY

17. Point #17 is located on the eastern limit of Lot 15, Concession II, former Thurlow Township, at the southerly limit of the Highway #401. The boundary turns south and runs approximately 4.44 km to point #18. Veridian points 17A to 17D are four excursions taking in the 4 registered parcels of land as detailed in the following table. These four excursions are to be excluded from Veridian Connections Rate Zone Service Area.

| Veridian Point No. | Municipal Address, City of Belleville | Legal Description |
|---------------------------|--|--|
| 17A | 326 Airport Parkway W | Pt. Lot 15, Con 2 Thurlow, as in QR271589 |
| 17B | 374 Airport Parkway W | Pt. Lot 15, Con 2 Thurlow, as in QR98635 |
| 17C | 382 Airport Parkway W | Pt. Lot 15, Con 2 Thurlow, Pt. 1, 21R-11952 |
| 17D | 150 Antrim Road | Pt. Lots 15 & 16, Con 1, Pts 2 & 3, 21R-1209 |

**Schedule 1 definition of Distribution Service Area
of Elexicon Energy Inc. - Veridian Connections
Rate Zone**

This Schedule specifies the area in which the Licensee is authorized to distribute and sell electricity in accordance with condition 8.1 of this Licence.

18. Point # 18 is located on the easterly limit of Lot 15, Broken Front Concession, former Thurlow Township, at the northerly limit of Highway #2 (Dundas Street East). The boundary turns west and runs approximately 0.68 km to point #19.
19. Point #19 is located on the northerly limit of Highway #2 (Dundas Street East) approximately 0.68km west of point #18. The boundary then turns south and follows the east lot line of 665 Dundas Street East (East Half Lot 13, Broken Front Concession, former Thurlow Township) and runs approximately 0.28 km south to point #20.

SOUTHERN BOUNDARY

20. Point #20 is located on the north shore of the Bay of Quinte at the south-east corner of 665 Dundas Street East. This point is approximately 1.55 km west of Elmwood Drive. The boundary follows the north shore of the Bay of Quinte westward to point #1.

Schedule 1 definition of Distribution Service Area of Elexicon Energy Inc. - Veridian Connections Rate Zone

This Schedule specifies the area in which the Licensee is authorized to distribute and sell electricity in accordance with condition 8.1 of this Licence.

BROCK – BEAVERTON SERVICE AREA

The alpha-numeric point numbers below refer to the reference map provided on page 32 of this document.

WESTERN BOUNDARY

1. The western boundary starts at point # 1, which is located at the intersection of the railway and Concession 5. The boundary follows the railway to point # 2.
2. Point # 2 is 1.5 km from point # 1 along the railway. The boundary turns west, parallel to Main Street West to point # 3.
3. Point # 3 is located on Nine Mile Road, 0.35 km from Main Street West. The boundary continues along Nine Mile Road to point # 4.
4. Point # 4 is located on Nine Mile Road, 0.16 km from Main Street West. The boundary turns west parallel to Main Street West to point # 5.
5. Point # 5 is located 0.13 km from point # 4. The boundary turns north parallel to Nine Mile Road to point # 6.
6. Point # 6 is located 0.11 km from point # 5. The boundary turns west parallel to Main Street West to point # 7.
7. Point # 7 is located 0.2 km from point # 6. The boundary turns north parallel to Nine Mile Road to point # 8.
8. Point # 8 is located 0.07 km from point # 7. The boundary turns and follows Lake Simcoe to point # 9.
9. Point # 9 is located 0.05 km from Harbour Park Crescent. The boundary follows the harbour jetty to point # 10.
10. Point # 10 is located 0.28 km from point # 9. The boundary turns north parallel to the Lake Simcoe Shore to point # 11.
11. Point # 11 is located 0.11 km from point # 10. The boundary turns east to point # 12.
12. Point # 12 is located 0.03 km from the end of Wellington Street on the Lake Simcoe Shore. The boundary follows the lake to point # 13.

NORTHERN BOUNDARY

13. Point # 13 is located on the lakeshore at the continuation of Victoria Street. The boundary turns east to the intersection of Victoria and Morrison Ave. The boundary turns north to follow Morrison Ave. to point # 14.

Schedule 1 definition of Distribution Service Area of Elexicon Energy Inc. - Veridian Connections Rate Zone

This Schedule specifies the area in which the Licensee is authorized to distribute and sell electricity in accordance with condition 8.1 of this Licence.

-
14. Point # 14 is located at the intersection of 9th Street and Morrison Ave. The boundary turns to the east and follows the road allowance for 9th Street to point # 15.
 15. Point # 15 is located at the railway on the continuation of the road allowance from 9th Street. The boundary turns north to follow the railway approximately 1100m to point # 16.
 16. Point # 16 turns east and runs approximately 270m along the north storm pond boundary to point # 17.
 17. Point # 17 turns south and runs approximately 530m along eastern storm pond boundary to point 18.
 18. Point # 18 turns east and runs approximately 20m along the north boundary of Block 55 (future development Block) to point # 19.
 19. Point # 19 turns south and runs approximately 50m along the east boundary of Block 55 (future development block) to point # 20 located on the south side of Street 'F'.
 20. Point # 20 turns west and runs approximately 31m along Street 'F' to point # 21.
 21. Point # 21 turns south and runs approximately 219m along Street 'B' to point # 22.
 22. Point # 22 turns east to point # 23 which is located 0.08 km from Mara Road.
 23. Point # 23 turns parallel to Mara Road and runs to point # 24.
 24. Point # 24 is located where the boundary intersects the river. The boundary turns east to follow the river to point # 25.

EASTERN BOUNDARY

25. Point # 25 is located 0.76 km from Main Street East. The boundary turns south parallel to James Street to point # 26.
26. Point # 26 is located 0.32 km from James Street and 0.26 km from Main Street. The boundary turns east, parallel to Main Street, to point A.
 - A. Point A is located 0.24 km from point # 26. The boundary turns south parallel to James Street to point B.
 - B. Point B is located 0.33 km south of point A. The boundary turns southwest to point C.
 - C. Point C is located at the river 0.42 km from point B. The boundary turns southwest to point D.
 - D. Point D is located 0.43 km from Madill on Simcoe Street. The boundary continues southwest to point E.
 - E. Point E is located 0.1 km from point D. The boundary turns south to point F.

SOUTHERN BOUNDARY

- F. Point F is located 0.5 km south of point E. The boundary turns west along the road allowance for Concession 5 to point # 1.

Schedule 1 definition of Distribution Service Area of Elexicon Energy Inc. - Veridian Connections Rate Zone

This Schedule specifies the area in which the Licensee is authorized to distribute and sell electricity in accordance with condition 8.1 of this Licence.

BROCK – CANNINGTON SERVICE AREA

The alpha-numeric point numbers below refer to the reference map provided on page 33 of this document.

WESTERN BOUNDARY

1. The western boundary of Cannington starts at point # 1. Point # 1 is located 0.26 km east of Sideline 18A and 0.65 km south of point # 2 (on Cameron Street West).
2. Point # 2 is located 0.35 km west of Albert Street on Cameron Street West. The boundary continues north to point # 3.
3. Point # 3 is located 0.07 km north of point # 2. The boundary turns east parallel to Cameron Street West to point # 4.
4. Point # 4 is located 0.33 km east of point # 3. The boundary turns north parallel to Country Lane to point # 5.

NORTHERN BOUNDARY

5. Point # 5 is located 0.5 km north of point # 4 at the Beaver River. The boundary follows the river east to point # 6.
6. Point # 6 is located 0.1 km north of Riverlea Road and 0.25 km west of Laidlaw Street North. The boundary turns north parallel to Laidlaw Street North to point # 7.
7. Point # 7 is located 0.31 km north of point # 6. The boundary turns east parallel to Cameron Street East to point # 8.

EASTERN BOUNDARY

8. Point # 8 is located 1.34 km east of Laidlaw Street. The boundary turns south parallel to Laidlaw Street North to point # 9.
9. Point # 9 is located 0.56 km south of point # 8. The boundary turns east parallel to Cameron Street East to point # 10.
10. Point # 10 is located 0.16 km east of point # 9. The boundary turns south to point # 11.
11. Point # 11 is located 1.0 km west of Regional Road # 2 on Cameron Street East. The boundary continues south to point # 12.
12. Point # 12 is located 0.05 km south of Cameron Street and 0.03 km west of point # 11. The boundary turns west parallel to Cameron Street East to point # 13.
13. Point # 13 is located 0.42 km west of point # 12. The boundary turns south parallel to Peace Street to point # 14.

**Schedule 1 definition of Distribution Service Area
of Elexicon Energy Inc. - Veridian Connections
Rate Zone**

This Schedule specifies the area in which the Licensee is authorized to distribute and sell electricity in accordance with condition 8.1 of this Licence.

14. Point # 14 is located 0.68 km south of point # 13. The boundary turns southwest to point # 15.
15. Point # 15 is located 0.86 km south of Cameron Street East and 0.72 km east of Laidlaw Street South. The boundary turns south parallel to Laidlaw Street South to point # 16.

SOUTHERN BOUNDARY

16. Point # 16 is located 0.12 km south of point # 15. The boundary turns west parallel to Cameron Street East to point # 17.
17. Point # 17 is located 0.89 km west of point # 16. The boundary turns north parallel to Laidlaw Street South to point # 18.
18. Point # 18 is located 0.54 km north of point # 17. The boundary turns west parallel to Cameron Street West to point # 19.
19. Point # 19 is located 0.38 km west of point # 18. The boundary turns southwest to point # 20.
20. Point # 20 is located 0.51 km south of Cameron Street West and 0.46 km east of Sideline 18A. The boundary turns south, parallel to Sideline 18A, to point A. A. Point A is located 0.16 km south of point # 20. The boundary turns west to point # 1.

**Schedule 1 definition of Distribution Service Area
of Elexicon Energy Inc. - Veridian Connections
Rate Zone**

This Schedule specifies the area in which the Licensee is authorized to distribute and sell electricity in accordance with condition 8.1 of this Licence.

BROCK – SUNDERLAND SERVICE AREA

The alpha-numeric point numbers below refer to the reference map provided on page 34 of this document.

WESTERN BOUNDARY

1. Point # 1 is located 0.34 km south of River Street and 0.4 km west of Albert Street. The boundary continues north to point # 2.
2. Point # 2 is located 0.14 km west of Rynard Street, on River Street. The boundary turns west to point # 3.
3. Point # 3 is located 0.08 km west of point # 2 on the north side of River Street. The boundary turns north to point # 4.
4. Point # 4 is located 0.29 km north of point # 3. The boundary turns east to point # 5.
5. Point # 5 is 0.05 km east of point # 4. The boundary turns north to point # 6.
6. Point # 6 is located 0.03 km north of point # 5. The boundary turns east to point # 7.
7. Point # 7 is located 0.02 km east of point # 6. The boundary turns north to point # 8.

NORTHERN BOUNDARY

8. Point # 8 is located 0.15 km north of point # 7. The boundary turns east to point # 9.
9. Point # 9 is located 0.41 km east of point # 8. The boundary turns south to point # 10.
10. Point # 10 is located 0.07 km south of point # 9. The boundary turns east to point # 11.
11. Point # 11 is located 0.69 km east of point # 10. The boundary turns south to point # 12.

EASTERN BOUNDARY

12. Point # 12 is 0.17 km east of Hwy # 12 on Concession 6. The boundary turns east on Concession 6 to point # 13.
13. Point # 13 is 0.33 km east of point # 7 on Concession 6. The boundary turns south to point # 14.
14. Point # 14 is 0.13 km south of point # 13. The boundary turns west to point # 15, parallel to Concession 6.
15. Point # 15 is 0.48 km west of point # 14. The boundary turns south to point # 16, and parallel to Hwy # 12.

**Schedule 1 definition of Distribution Service Area
of Elexicon Energy Inc. - Veridian Connections
Rate Zone**

This Schedule specifies the area in which the Licensee is authorized to distribute and sell electricity in accordance with condition 8.1 of this Licence.

SOUTHERN BOUNDARY

16. Point # 16 is 0.6 km south of point # 15. The boundary turns west to point # 17.
17. Point # 17 is 0.02 km north of Thompson Road on Albert Street South. The boundary turns north to point # 18.
18. Point # 18 is on Albert Street South, 0.30 km north of point # 17. The boundary turns southwest to point # 19, running along the northern property lines of the residential lots that front the north side of Rennie Street.
19. Point # 19 is 0.19 km southwest of point # 18 and is located at the north-west corner of the most westerly of the residential lots that front the north side of Rennie Street. The boundary turns south and runs along the western flank of the property, extending across Rennie Street to point # 20.
20. Point # 20 is 0.04 km south of point # 19 and is located on the south side of Rennie Street. The boundary turns west and runs to point # 21, following Rennie Street and then the southern flank of the most southerly residential lot that fronts the west side of Rennie Street.
21. Point # 21 is 0.08 km west of point # 16 and is located at the south-west corner of the most southerly residential lot that fronts the west side of Rennie Street. The boundary turns northwest and runs in an uneven line to point # 22, following the western property lines of the residential lots that front the west side of Rennie Street.
22. Point # 22 is 0.07 km northwest of point # 21 and is located on the western property line of a residential lot that fronts the west side of Rennie Street. The boundary turns west and runs to point # 1.

Schedule 1 definition of Distribution Service Area of Elexicon Energy Inc. - Veridian Connections Rate Zone

This Schedule specifies the area in which the Licensee is authorized to distribute and sell electricity in accordance with condition 8.1 of this Licence.

CLARINGTON – BOWMANVILLE SERVICE AREA

The alpha-numeric point numbers below refer to the reference map provided on page 35 of this document.

WESTERN BOUNDARY

1. The boundary starts at point # 1, 0.26 km north of Lake Ontario on Waverly Road and follows the road allowance to point # 2.
2. Point # 2 is 0.17 km south of Hwy # 401 on Waverly Road. The boundary turns west for 0.5 km to point # 3.
3. Point # 3 is 0.05 km south of South Service Road on the extension of Martin Road. The boundary turns north following the extension of Martin Road to the intersection of Martin Road and Hwy # 57 to point # 4.
4. The boundary follows Hwy # 57 north to point # 5 at the intersection of Hwy # 57 and Concession Road # 3.

NORTHERN BOUNDARY

5. The boundary turns east to point # 6 following Concession Road # 3.

EASTERN BOUNDARY

6. Point # 6 is 0.4 km west of Lambs Road on Concession Road # 3. The boundary turns south for 1.05 km to point # 7, and runs parallel to Lambs Road.
7. Point # 7 turns east for 0.4km until it meets Lambs Road at point # 8.
8. Point # 8 turns south and runs along Lambs Road for 0.3 km to point # 9.
9. Point # 9 turns east and runs along the northern property line of 2273 Lambs Road for 100m until it reaches the northeast corner of said property at Point # 10.
10. Point # 10 turns south and runs along the eastern property line of 2273 Lambs Road for 70m until it reaches the southeast corner of said property at Point # 11.
11. Point # 11 turns west and runs along the southern property line of 2273 Lambs Road for 100 m to Point # 12.
12. Point # 12 turns south and runs along Lambs Road for 0.7 km to Point # 13, at the intersection of Lambs Road and Concession Street East.
13. Point # 13 turns west for 0.4 km to Point # 14.
14. Point # 14 turns south for 1.7 km to Point # 15, parallel to Lambs Road.

**Schedule 1 definition of Distribution Service Area
of Elexicon Energy Inc. - Veridian Connections
Rate Zone**

This Schedule specifies the area in which the Licensee is authorized to distribute and sell electricity in accordance with condition 8.1 of this Licence.

15. Point # 15 turns east along north lot line for approximately 420m to Point #16, parallel to Baseline Road East.
16. Point #16 turns south at Lambs Road for approximately 320m to Point #17.
17. Point # 17 turns west at Baseline Road East for approximately 420m to Point #18 at Haines Street.
18. Point # 18 turns south at Haines Street for 1.5km to Point #19.
19. Point # 19 turns east following the property line on Yacht Club Drive for approximately 155m to Point #20.
20. Point # 20 turns south following the property line on Yacht Club Drive for approximately 280m to Point #21.

SOUTHERN BOUNDARY

21. Point # 21 is 0.4 km west of South Service Road. The boundary follows Lake Ontario to point # 1.

**Schedule 1 definition of Distribution Service Area
of Elexicon Energy Inc. - Veridian Connections
Rate Zone**

This Schedule specifies the area in which the Licensee is authorized to distribute and sell electricity in accordance with condition 8.1 of this Licence.

CLARINGTON – NEWCASTLE SERVICE AREA

The alpha-numeric point numbers below refer to the reference map provided on page 36 of this document.

WESTERN BOUNDARY

1. The boundary starts at point # 1 where the continuation of Toronto Street would meet Lake Ontario. The boundary heads north along the road allowance of Toronto Street to point # 2, 1 km west of Mill Street at Hwy # 401.
2. The boundary continues north from this point and follows the road allowance of Rudell Road to point # 3, where Rudell Road terminates north of Given Road, with the exception of an additional contiguous parcel extending to the west of this line approximately opposite Hart Blvd. known as Lot 31, Concession 1 in the former Township of Clarke in Clarington, Part 1, Plan 40R-2074 (St. Francis Elementary School),
3. The boundary continues north from point # 3 to point # 4 north of Hwy # 115.

NORTHERN BOUNDARY

4. Point # 4 is immediately south of the railway track and just northwest of Hwy # 115. The boundary follows the south side of the railway track to point 5. Veridian point 4A is one excursion taking in the registered parcel of land as detailed in the following table. This excursion is to be excluded from Veridian Connections Rate Zone Service Area.

| Veridian Point No. | Municipal Address, Town of Newcastle | Legal Description |
|---------------------------|---|---|
| 4A | 2521 Bellwood Drive | Pt. Lot 30, Con 2 Clarke, as in D471130 |

5. Point # 5 is located at the intersection of the east side of Hwy # 115 and the south side of the railway. The boundary proceeds east following the south side of the railway to point # 6.
6. Point # 6 is located 0.09 km west of North Street on the south side of the railway. The boundary turns north to point # 7, parallel to North Street.
7. Point # 7 is located 0.3 km north of point # 6 and 0.09 km west of North Street. The boundary turns east to point # 8.
8. Point # 8 is located to the east of North Street and is located north of Point # 9. The boundary runs between Points #8 and #9 and is parallel to North Street.
9. Point # 9 on the west side of North Street along the southern edge of the railway line. The boundary is parallel to the railway line to Point # 10.
10. Point # 10 is located along the southern edge of the railway line at the west edge of Arthur St. The boundary follows the property boundaries of Point 10A and follows north along Arthur Street to Point #11. Point 10A is an excursion and is included in the Veridian Connections Rate Zone Service Area.

**Schedule 1 definition of Distribution Service Area
of Elexicon Energy Inc. - Veridian Connections
Rate Zone**

This Schedule specifies the area in which the Licensee is authorized to distribute and sell electricity in accordance with condition 8.1 of this Licence.

| <u>Point No.</u> | <u>Municipal Address</u> | <u>Pin #</u> | <u>Legal Description</u> |
|------------------|--------------------------|------------------|--|
| 10A | 220 Arthur St | 26653-0020 LT | Pt Lt 27 Con 2 Clarke (Newcastle) As In D504907; Clarington |

11. Point # 11 is located north of Point # 10 and is on the west edge of Arthur Street. The boundary crosses Arthur Street to Point #12.
12. Point # 12 is located to the east of Arthur Street and above Point # 13. The boundary is parallel to Arthur Street to Point # 13.
13. Point # 13 is located to the right of Arthur Street immediately below the railway line. The boundary is parallel to the railway to point # 14.

Notwithstanding the above alpha-numeric point numbers that refer to the reference map provided on page 36 of this document for the CLARINGTON – NEWCASTLE SERVICE AREA, the Licensee is authorized to distribute and sell electricity to customers located at the following addresses:

| <u>Municipal Address</u> |
|--|
| 582 North St, Newcastle Ontario, L1B 1L9 |
| 598 North St, Newcastle Ontario L1B 1L9 |
| 618 North St, Newcastle Ontario, L1B 1L9 |
| 656 North St, Newcastle Ontario, L1B 1L9 |
| 680 North St, Newcastle Ontario, L1B 1L9 |
| 481 Arthur St., Newcastle Ontario, L1B 1L8 |

EASTERN BOUNDARY

14. Point # 14 is located at the intersection of the railway and Hwy # 2, on the west side of the railway. The boundary follows the road allowance for Farrow Ave. to point # 15 at Hwy # 401. This excursion is to be included in Veridian Connections Rate Zone Service Area.

| Veridian Point No. | Municipal Address, Town of Newcastle | Legal Description |
|---------------------------|---|--------------------------|
| 14A | 3742 Hwy 2, Clarke Township | Not available |

15. Point # 15 is located at the intersection of Farrow Ave and Hwy # 401. The boundary continues south to point # 16 following the road allowance for Riley Road.

SOUTHERN BOUNDARY

16. Point # 16 is located at the continuation of Riley Road and Lake Ontario. The boundary turns west following the Lake Ontario shore to point # 1.

Schedule 1 definition of Distribution Service Area of Elexicon Energy Inc. - Veridian Connections Rate Zone

This Schedule specifies the area in which the Licensee is authorized to distribute and sell electricity in accordance with condition 8.1 of this Licence.

CLARINGTON – ORONO SERVICE AREA

The alpha-numeric point numbers below refer to the reference map provided on page 37 of this document.

WESTERN BOUNDARY

1. Point #1 is located 0.2 km west of Main Street following the extension of the road allowance of Sommerville Drive. The boundary continues north to point # 2.
2. Point # 2 is located on Princess Street, 0.09 km west of Leigh Street. The boundary continues north to point # 3.
3. Point # 3 is located 0.09 km north of Princess Street and 0.1 km west of Leigh Street. The boundary continues north to point # 4.
4. Point # 4 is located 0.4 km west of Main Street on Station Street. The boundary continues north to point # 5.
5. Point # 5 is located 0.29 km north of the Mill Street and Main Street intersection and 0.18 km west of Main Street. The boundary continues north to point # 6.
6. Point # 6 is located 0.88 km north of the Mill Street and Main Street intersection and 0.18 km west of Main Street.

NORTHERN BOUNDARY

7. The boundary continues east from point # 6 through the north lot line of 5771 Main Street to point # 7. Point # 7 is located on Mill Lane, 0.17 km north of the intersection of Mill Lane and Mill Street. The boundary continues east to point # 8.
8. Point # 8 is located on Mill Street, 0.15 km north of the intersection of Mill Street and Mill Lane. The boundary continues east following the west property line of the Mill Street road allowance to point # 9.

EASTERN BOUNDARY

9. Point # 9 is located at the intersection of Mill Street and Hwy # 115. The boundary turns south along the west property line of Hwy # 115 to point # 10.

SOUTHERN BOUNDARY

10. Point # 10 is located at the end of Sommerville Drive at the west boundary of the road allowance for Hwy # 35/115. The boundary turns west from this point and follows the road allowance for Sommerville Drive to point # 1 and includes the following the civic address: 4990 Main Street, Orono.

**Schedule 1 definition of Distribution Service Area
of Elexicon Energy Inc. - Veridian Connections
Rate Zone**

This Schedule specifies the area in which the Licensee is authorized to distribute and sell electricity in accordance with condition 8.1 of this Licence.

GRAVENHURST SERVICE AREA

The alpha-numeric point numbers below refer to the reference map provided on page 38 of this document.

Beginning at the most northeast corner of the Town of Gravenhurst (the northeast corner of Muskoka County Conc. IX Lot 1), in a clockwise direction, the franchise area limits are an irregular polygon the bounds of which are described as a line:

EASTERN BOUNDARY

The meets and bounds generally begin at the north-east corner of the Town of Gravenhurst but exclude Lot 1, Conc. IX and Lot 1, Conc VIII Muskoka.

1. Beginning at the intersection of the boundary between Lots 1 and 2, Conc. IX Muskoka and the north Muskoka County line, proceeding southerly along the boundary between Lots 1 & 2 (generally parallel to the eastern limit of the Town of Gravenhurst, or the Town of Bracebridge Town Line, being the Muskoka/Draper County Line) to point # 1A at the southeast corner of Lot 1, Conc. VIII, Muskoka;

At Point #1A turning westerly along the Conc. VIII/Conc. VII boundary and then following an irregular line along the west and south edges of Registered properties known as 1181 and 1188 Campbell's Road, Gravenhurst to Point # 1B at the intersection with the easterly limit of the Town of Gravenhurst;

At Point #1B turning southerly along the easterly limit of the Town of Gravenhurst to the point where the Town Line turns sharply east (southeast corner of Lot 1, Conc. I, Muskoka County 1 Lot 1);

- 1.B continuing straight through the preceding point (and not following the Town line) in a straight line southerly along the boundary between the Counties of Ryde and Morrison to the north/south midpoint of Lot 1, Conc. X, Morrison;

SOUTHERN BOUNDARY

2. turning sharply west and continuing in a straight line bisecting Conc. X, Morrison, into north/south halves through Lots 1-13 and into Range East, Morrison, to a point on the boundary between Range West and Range East, Morrison;
3. there making a slight bend northerly and continuing westerly along a line again bisecting Conc. X through Lots 18-25, Conc. X, Morrison to a point immediately west of the boundary between Lots 25 and 26, Conc. X, Morrison;
4. turning sharply northerly along a line just west of the boundary between Lots 25 and 26, through Conc. X to a point midway (north/south) in Conc. XII, Morrison;

**Schedule 1 definition of Distribution Service Area
of Elexicon Energy Inc. - Veridian Connections
Rate Zone**

This Schedule specifies the area in which the Licensee is authorized to distribute and sell electricity in accordance with condition 8.1 of this Licence.

WESTERN BOUNDARY

5. there turning westerly and proceeding along a line approximately bisecting Conc. XII, Morrison, to a point on the boundary between Lots 34 and 35, Morrison;
6. turning sharply northerly along the boundary between Lots 34 and 35, Morrison to a point on the Morrison County boundary with Muskoka County;
7. turning sharply westerly and continuing on the south side of the boundary to the intersection of Morrison, Wood, and Muskoka Counties;
8. there turning northerly and following a line along the east side of the boundary between Wood and Muskoka Counties to a point midway in Conc. XVI, Wood;
9. there turning westerly and following a line bisecting Conc. XVI, Wood through Lots H to A to the boundary between Lot A and Lot 1, Conc. XVI, Wood;
10. there turning sharply northerly along a line following the west side of that boundary to the intersection with the allowance between Conc. XV and XVI, Wood;
11. turning sharply westerly along the center of that allowance to a point at the boundary between Lots 3 & 4, Wood;
12. turning sharply northerly along the boundary between Lots 3 & 4, Wood to the boundary between Conc. XII and XIII;
13. there turning sharply westerly and following the boundary between Conc. XII and XIII, Wood to the westerly limit of Lot 8, Wood County, also known as the westerly limit of the Town of Gravenhurst;
14. there turning sharply northerly and following the westerly limit of Lot 8, Wood finishing at the intersection of the easterly limit of Lot 9 Wood and Muskoka Road 169;
15. then turning sharply east and following the southerly limit of Lot 35 Con 14 Muskoka (2246 Muskoka Road 169) to the shore of Lake Muskoka, Point # 16.

NORTHERN BOUNDARY

16. then turning sharply north, then east to strike out across Lake Muskoka following the Gravenhurst/Bracebridge Town Line being an irregular open water route meeting the eastern shore at the northwest corner of Muskoka County Conc. IX Lot 14, and then a straight line easterly along the line between Conc. IX and X, Muskoka County, returning to the northeast corner of the Town of Muskoka.

**Schedule 1 definition of Distribution Service Area
of Elexicon Energy Inc. - Veridian Connections
Rate Zone**

This Schedule specifies the area in which the Licensee is authorized to distribute and sell electricity in accordance with condition 8.1 of this Licence.

PORT HOPE SERVICE AREA

The alpha-numeric point numbers below refer to the reference map provided on page 39 of this document.

WESTERN BOUNDARY

1. The western boundary of the existing Port Hope Service Area starts from point # 1, 1.37 km west of Victoria Street at Lake Ontario.
2. The boundary continues north to point # 2 located at 0.63 km west of Toronto Road on Marsh Road. The boundary continues north to point # 3.

NORTHERN BOUNDARY

3. Point # 3 is located 0.2 km west of Toronto Road at Hwy # 401. The boundary turns east to point # 4.

EASTERN BOUNDARY

4. Point # 4 is located at the intersection of Hamilton Road and Hwy # 401. The boundary turns south following the road allowance for Hamilton Road to point # 5. Veridian point 4A is one excursion taking in the registered parcel of land as detailed in the following table. This excursion is to be included in Veridian Connections Rate Zone Service Area.

| Veridian Point No. | Municipal Address, Town of Port Hope | Legal Description |
|---------------------------|---|---|
| 4A | 1699 Hamilton Road | Part Lot 35, Con 1, Hamilton, As in HN7842 except CB53694 south of Service Road |

SOUTHERN BOUNDARY

5. Point # 5 is located on the extension of Hamilton Road where it intersects Lake Ontario. The boundary turns west, following the lakeshore to point # 1.

**Schedule 1 definition of Distribution Service Area
of Elexicon Energy Inc. - Veridian Connections
Rate Zone**

This Schedule specifies the area in which the Licensee is authorized to distribute and sell electricity in accordance with condition 8.1 of this Licence.

SCUGOG SERVICE AREA

The alpha-numeric point numbers below refer to the reference map provided on page 40 of this document.

Beginning at the most northwest corner of the Veridian Connections Rate Zone Service Area, in a clockwise direction, the franchise area limits are an irregular polygon the bounds of which are described as a line:

NORTHERN BOUNDARY

1. Proceeding generally east along Reach Street to the intersection of Simcoe Street where it meets Coulter Street.
2. Continuing along Coulter Street easterly to 44.11531°N by 78.93664°W approximately in the middle of Lake Scugog

EASTERN BOUNDARY

3. Turning shapely south and continuing down the Lake to 44.10069°N by 78.92997°W

SOUTHERN BOUNDARY

SOUTHERN BOUNDARY

4. Turning sharply west running parallel with Scugog Street before meeting with Applewood Crescent and continuing west to 44.09829°N latitude by 78.94213° W.
5. There turning to a south south-westerly direction before intersecting with Simcoe Street at Vanedward Drive.
6. There making a sharp turn west for approximately one hundred meters before turning gently south south-westerly again.
7. There meeting with the south east corner of Earl S Cuddy Blvd. heading in a westerly direction for about two hundred meters, then turning slightly to a west south-westerly direction.
8. Continuing to Union Avenue, still heading slightly to a south-westerly direction going east on Victoria Street past Union Avenue.
9. There making a slight bend back to westerly direction at the intersection of Ash Street continuing west to Old Scugog Road.
10. There it continues west to Maple Street. Veridian points 10A to 10E are five excursions taking in the 5 registered parcels of land as detailed in the following table. These five excursions are to be excluded from Veridian Connections Rate Zone Service Area.

| Veridian Point No. | Municipal Address, Town of Port Perry (Scugog) | Legal Description |
|---------------------------|---|--------------------------|
| 10A | 581 Victoria Street | Lot 46, Plan H50021 |
| 10B | 583 Victoria Street | Lot 45, Plan H50021 |

**Schedule 1 definition of Distribution Service Area
of Elexicon Energy Inc. - Veridian Connections
Rate Zone**

This Schedule specifies the area in which the Licensee is authorized to distribute and sell electricity in accordance with condition 8.1 of this Licence.

| | | |
|-----|---------------------|----------------------|
| 10C | 585 Victoria Street | Lot 44, Plan H50021 |
| 10D | 631 Victoria Street | Lot 130, Plan H50021 |
| 10E | 635 Victoria Street | Lot 129, Plan H50021 |

11. Turning sharply north and continuing north on Maple Street to Alma Street. Veridian points 11A to 10D are four excursions taking in the 4 registered parcels of land as detailed in the following table. These four excursions are to be excluded from Veridian Connections Rate Zone Service Area.

| Veridian Point No. | Municipal Address, Town of Port Perry (Scugog) | Legal Description |
|---------------------------|---|--------------------------|
| 11A | 117 Maple Street | Lot 131, Plan H50021 |
| 11B | 111 Maple Street | Lot 132, Plan H50021 |
| 11C | 105 Maple Street | Lot 133, Plan H50021 |
| 11D | 99 Maple Street | Lot 134, Plan H50021 |

12. Continuing in a straight-line north to Lot 17, Con 5, 1636 Scugog Street, turn east following the property line and then south down the property line of 1646 Scugog Street and then east along the property line of 1646 Scugog Street and 14972 Old Simcoe Street towards Old Simcoe Street. Turning north along the east property line of 14972 and 14990 Old Simcoe Street and turning along the north property line of 14990 Old Simcoe Road.
13. Turning sharply to the west and continuing to the intersection of Queen Street. Veridian point 13A is one excursion taking in the registered parcel of land as detailed in the following table. This excursion is to be included in Veridian Connection's Rate Zone Service Area.

| Veridian Point No. | Municipal Address, Town of Port Perry (Scugog) | Legal Description |
|---------------------------|---|--|
| 13A | 1599 Scugog Line 6 | Pt. Lots 16 & 17, Con 6 Reach, Pts. 2 & 4, 40R-24422 |

**Schedule 1 definition of Distribution Service Area
of Elexicon Energy Inc. - Veridian Connections
Rate Zone**

This Schedule specifies the area in which the Licensee is authorized to distribute and sell electricity in accordance with condition 8.1 of this Licence.

WESTERN BOUNDARY

14. Turning sharply north and continuing to 44.10160°N by 78.96246°W
15. Turning slightly east north-easterly to the intersection of Old Scugog Road and McDonald Street.
16. Turning sharply north and continuing to the intersection of Old Scugog Road and Reach Road returning to the northwest boundary.

Schedule 1 definition of Distribution Service Area of Elexicon Energy Inc. - Veridian Connections Rate Zone

This Schedule specifies the area in which the Licensee is authorized to distribute and sell electricity in accordance with condition 8.1 of this Licence.

UXBRIDGE SERVICE AREA

The alpha-numeric point numbers below refer to the reference map provided on page 41 of this document.

WESTERN BOUNDARY

1. The western boundary of the existing Uxbridge Service Area starts at point # 1, which is located 0.65 km south of Brock Street West and is in line with the east property line of Center Road. The boundary continues north to point # 2.
2. Point # 2 is located on the northeast corner of 22 South Beech Street. The boundary turns west along the south property lines of 280 and 282 Brock Street West to point # 3.
3. Point # 3 is located on the southeast corner of 282 Brock Street West. The boundary turns north along the west property line of 282 Brock Street West to point # 4.
4. Point # 4 is located on the north side of Brock Street West on the extension of the west property line of 282 Brock Street West. The boundary turns east to point # 5.
5. Point # 5 is located at the intersection of Brock Street West and Center Road. The boundary turns north to point # 6 .

NORTHERN BOUNDARY

6. Point # 6 is located at the center line of the road allowance of Center Road, and in line with the north property line of 49 Center Road. The boundary turns to the east along the north property lines of 237,235,233,231 Maple Street, 56,55 Balsam Street, 24,26,27,25 Pine Street, 8,10,9,7 Latcham Court and continues to point # 7.
7. Point # 7 is located 0.16 km west of Main Street, on the continuation of the north property lines of 8,10,9,7 Latcham Court. The boundary turns north to point # 8.
8. Point # 8 is located 0.16 km west of Main Street. The boundary turns to the east following the north property lines of 214 Main Street and 1,3,5,7 Harvey Street to point # 9.
9. Point # 9 is located at the northeast corner of 7 Harvey Street. The boundary turns to the north along the west property line of 11 Harvey Street to point # 10.
10. Point # 10 is located at the northwest corner of 11 Harvey Street. The boundary turns east to point # 11.
11. Point # 11 is located at the northeast corner of 11 Harvey Street. The boundary turns south to point # 12.
12. Point # 12 is located at the intersection of the east property line of 11 Harvey Street, and the north property line of 15 Harvey Street. The boundary turns east to point # 13.
13. Point # 13 is located 0.2 km east of Main Street. The boundary turns south to point # 14.

**Schedule 1 definition of Distribution Service Area
of Elexicon Energy Inc. - Veridian Connections
Rate Zone**

This Schedule specifies the area in which the Licensee is authorized to distribute and sell electricity in accordance with condition 8.1 of this Licence.

14. Point # 14 is located 0.01 km north of the northwest corner of 102 Second Avenue. The boundary turns east to follow the centerline of Barton Lane to point # 15.

EASTERN BOUNDARY

15. Point # 15 is located 0.01 km north of the northeast corner of 31 Remion Crescent. The boundary turns south following the eastern boundaries of 31,29,27,25,23,21,19,17,15,13,11,9 Remion Crescent to point # 16. Veridian points 15A to 15N are fourteen excursions taking in the 14 registered parcels of land as detailed in the following table. These fourteen excursions are to be excluded from Veridian Connection's Rate Zone Service Area.

| Veridian Point No. | Municipal Address, Town of Uxbridge | Legal Description |
|---------------------------|--|--------------------------|
| 15A | 13 Low Blvd | Lot 7, Plan 40M-1937 |
| 15B | 11 Low Blvd | Lot 6, Plan 40M-1937 |
| 15C | 9 Low Blvd | Lot 5, Plan 40M-1937 |
| 15D | 7 Low Blvd | Lot 4, Plan 40M-1937 |
| 15E | 5 Low Blvd | Lot 3, Plan 40M-1937 |
| 15F | 3 Low Blvd | Lot 2, Plan 40M-1937 |
| 15G | 1 Low Blvd | Lot 1, Plan 40M-1937 |
| 15H | 2 Low Blvd | Lot 14, Plan 40M-1937 |
| 15I | 4 Low Blvd | Lot 13, Plan 40M-1937 |
| 15J | 6 Low Blvd | Lot 12, Plan 40M-1937 |
| 15K | 8 Low Blvd | Lot 11, Plan 40M-1937 |
| 15L | 10 Low Blvd | Lot 10, Plan 40M-1937 |
| 15M | 12 Low Blvd | Lot 9, Plan 40M-1937 |
| 15N | 14 Low Blvd | Lot 8, Plan 40M-1937 |

16. Point # 16 is located on the southeast corner of 174 Reach Street. The boundary turns west to point # 17.

**Schedule 1 definition of Distribution Service Area
of Elexicon Energy Inc. - Veridian Connections
Rate Zone**

This Schedule specifies the area in which the Licensee is authorized to distribute and sell electricity in accordance with condition 8.1 of this Licence.

SOUTHERN BOUNDARY

17. Point # 17 is located 0.2 km south of Bell Street on Main Street. The boundary turns north on Main Street to point # 18.
18. Point # 18 is located 0.1 km south of Bell Street. The boundary turns west to point # 19.
19. Point # 19 is located 0.01 km west of the southeast corner of 166 Water Street. The boundary turns south following the center line of Water Street to point # 20.
20. Point # 20 is located 0.01 km east of the southeast corner of 172 Water Street. The boundary turns west following the south property line of 172 Water Street to point A.
 - A. Point A is located at the southwest corner of 188 Water Street. The boundary turns north following the west property lines of 188,170,168 Water Street to point B.
 - B. Point B is located at the northwest corner of 168 Water Street. The boundary turns west following the south boundary of 19,20 Joseph Street, 19,20 James Street, 18,20,22 Wilson Street, and 123 Toronto Street South. The boundary continues east to point # 1.

Schedule 1 Definition of Distribution Service Area of Elexicon Energy Inc. - Veridian Connections Rate Zone

This Schedule specifies the area in which the Licensee is authorized to distribute and sell electricity in accordance with condition 8.1 of this Licence.

Ajax – Pickering Veridian Connection’s Rate Zone Service Area



Appendix B

Schedule 1 definition of Distribution Service Area of Elexicon Energy Inc. - Veridian Connections Rate Zone

This Schedule specifies the area in which the Licensee is authorized to distribute and sell electricity in accordance with condition 8.1 of this Licence.

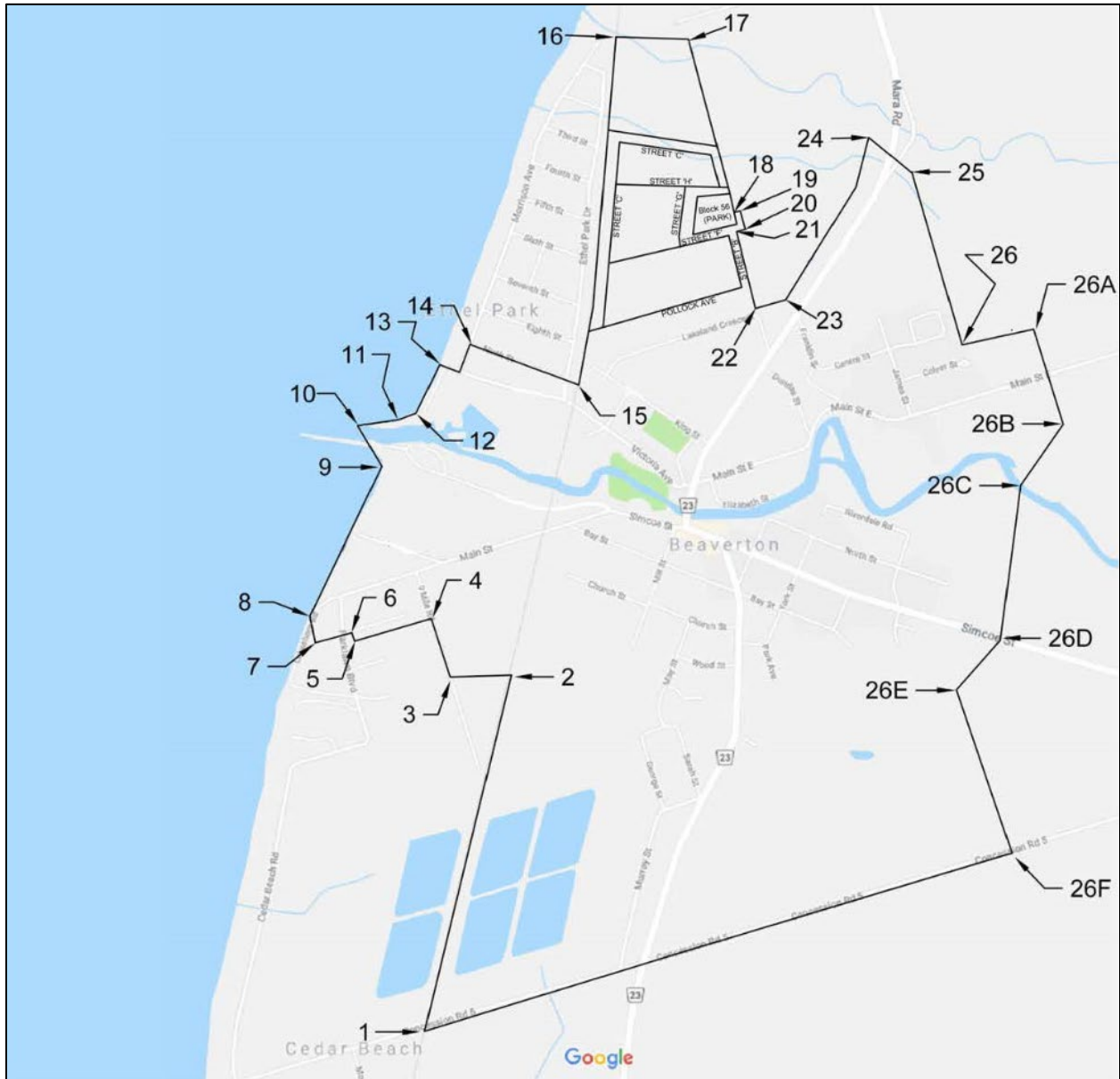
Belleville Veridian Connection's Rate Zone Service Area



Schedule 1 definition of Distribution Service Area of Elexicon Energy Inc. - Veridian Connections Rate Zone

This Schedule specifies the area in which the Licensee is authorized to distribute and sell electricity in accordance with condition 8.1 of this Licence.

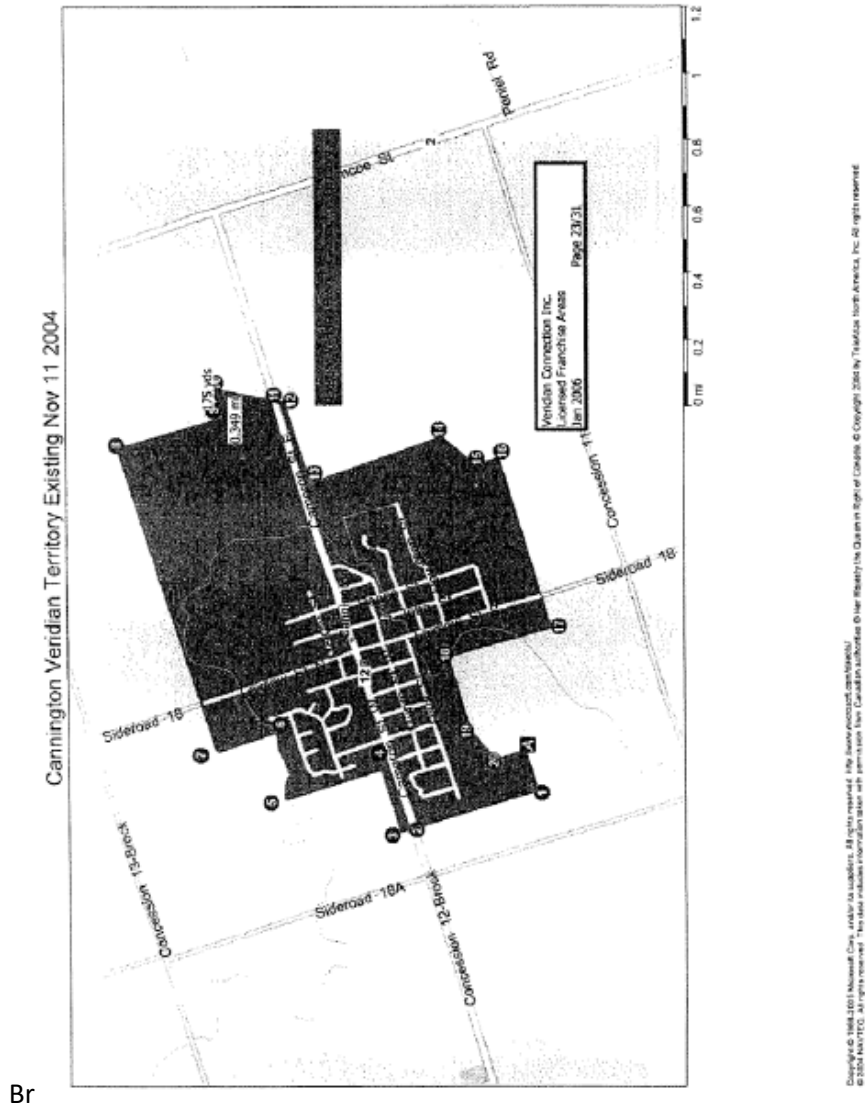
Brock-Beaverton Veridian Connection's Rate Zone Service Area



Schedule 1 Definition of Distribution Service Area of Elexicon Energy Inc. - Veridian Connections Rate Zone

This Schedule specifies the area in which the Licensee is authorized to distribute and sell electricity in accordance with condition 8.1 of this Licence.

Brock - Cannington Veridian Connection's Rate Zone Service Area



Appendix B

**Schedule 1 definition of Distribution Service Area
of Elexicon Energy Inc. - Veridian Connections
Rate Zone**

This Schedule specifies the area in which the Licensee is authorized to distribute and sell electricity in accordance with condition 8.1 of this Licence.

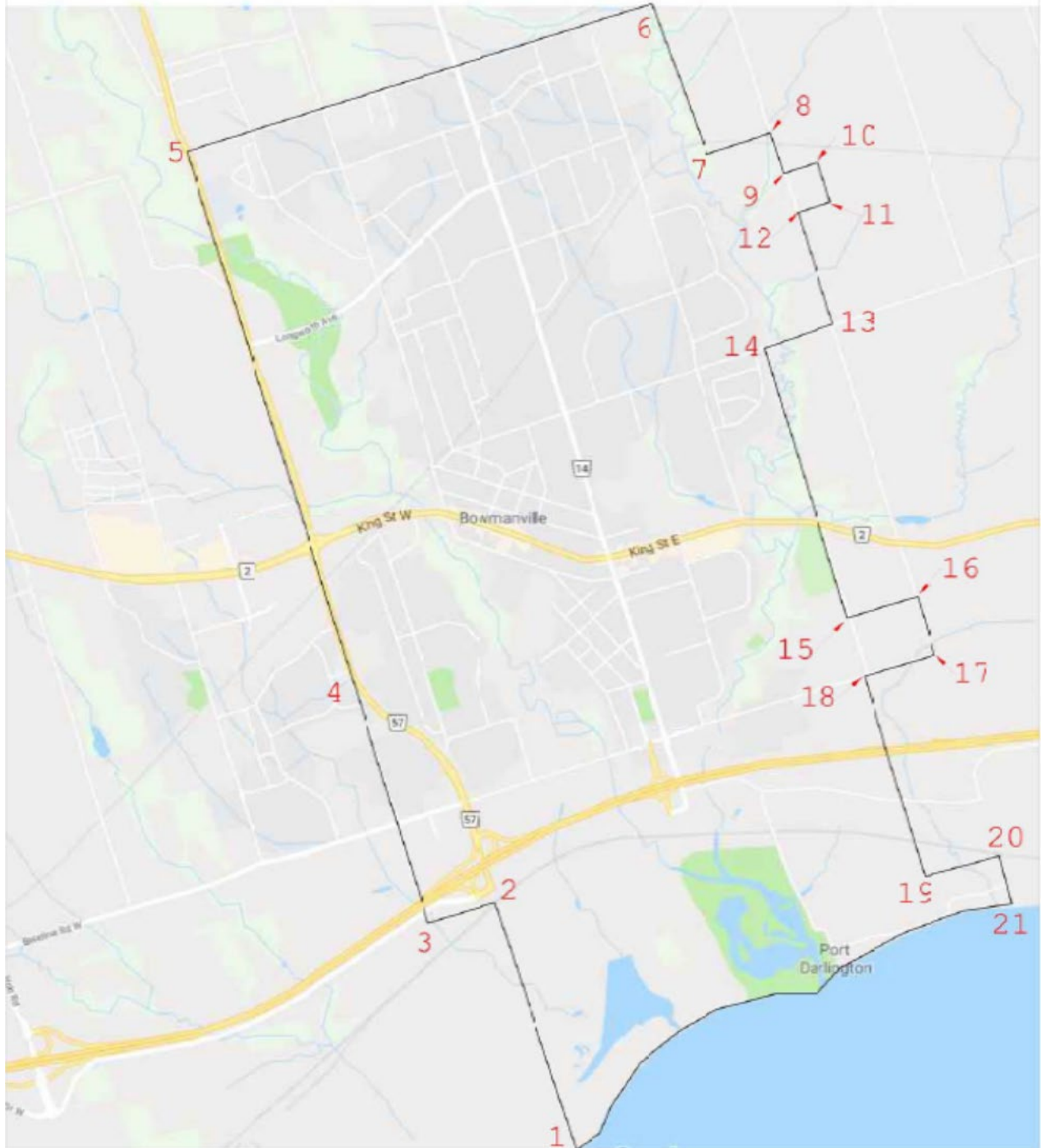
Brock - Sunderland Veridian Connection's Rate Zone Service Area



Schedule 1 definition of Distribution Service Area of Elexicon Energy Inc. - Veridian Connections Rate Zone

This Schedule specifies the area in which the Licensee is authorized to distribute and sell electricity in accordance with condition 8.1 of this Licence.

Clarington - Bowmanville Veridian Connection's Rate Zone Service Area

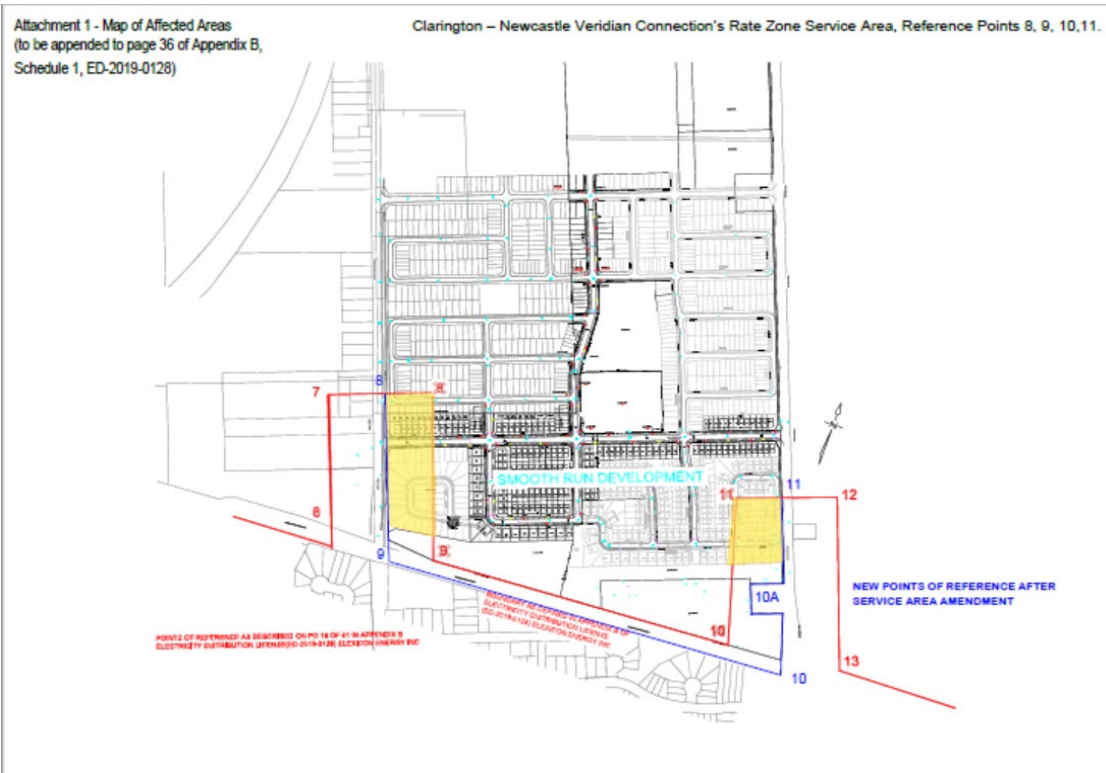


Appendix B

Schedule 1 definition of Distribution Service Area of Elexicon Energy Inc. - Veridian Connections Rate Zone

This Schedule specifies the area in which the Licensee is authorized to distribute and sell electricity in accordance with condition 8.1 of this Licence.

Clarington – Newcastle Veridian Connection’s Rate Zone Service Area, excluding Reference Points 8, 9, 10, 11

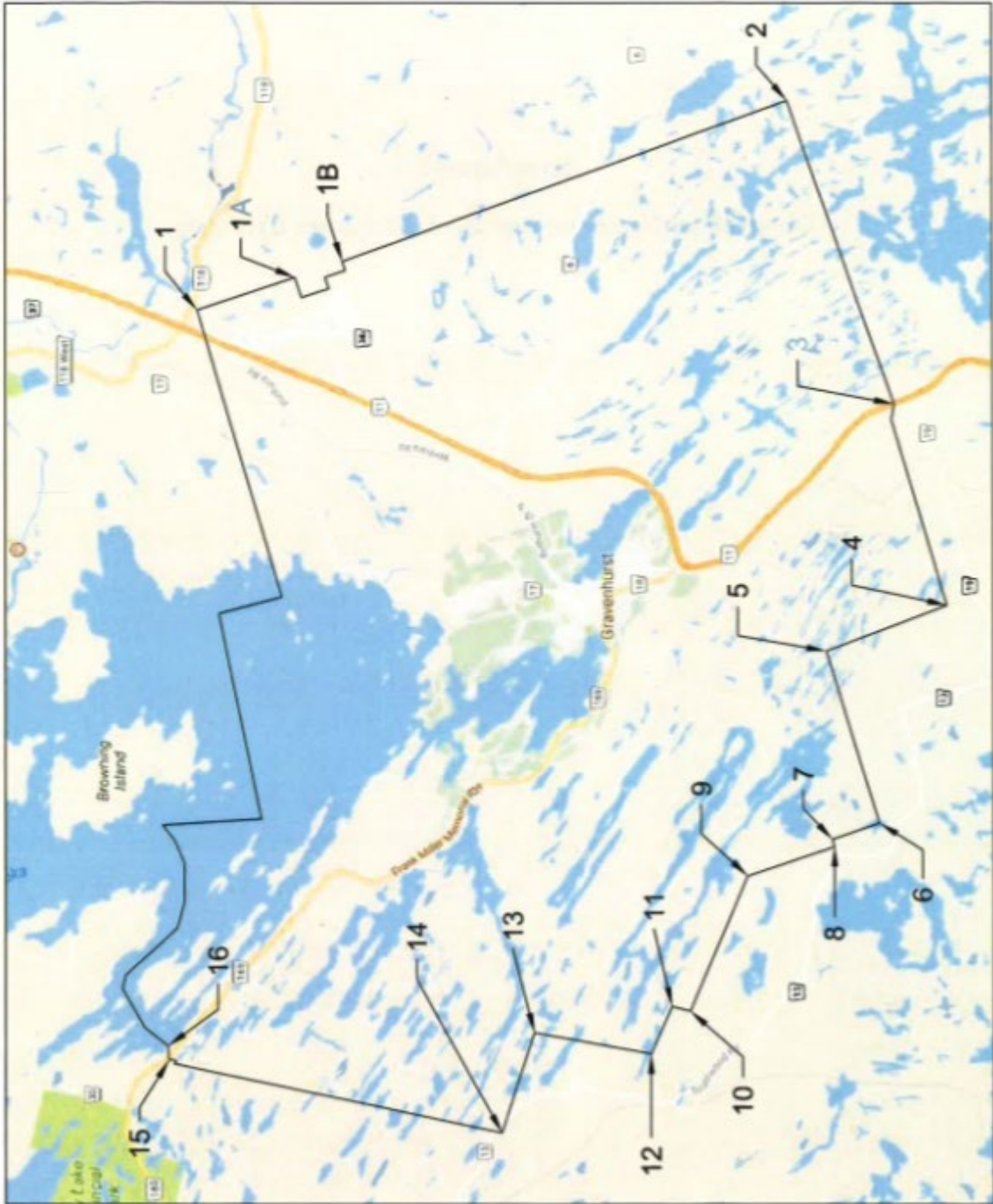


Appendix B

**Schedule 1 definition of Distribution Service Area
of Elexicon Energy Inc. - Veridian Connections
Rate Zone**

This Schedule specifies the area in which the Licensee is authorized to distribute and sell electricity in accordance with condition 8.1 of this Licence.

Gravenhurst Veridian Connection's Rate Zone Service Area

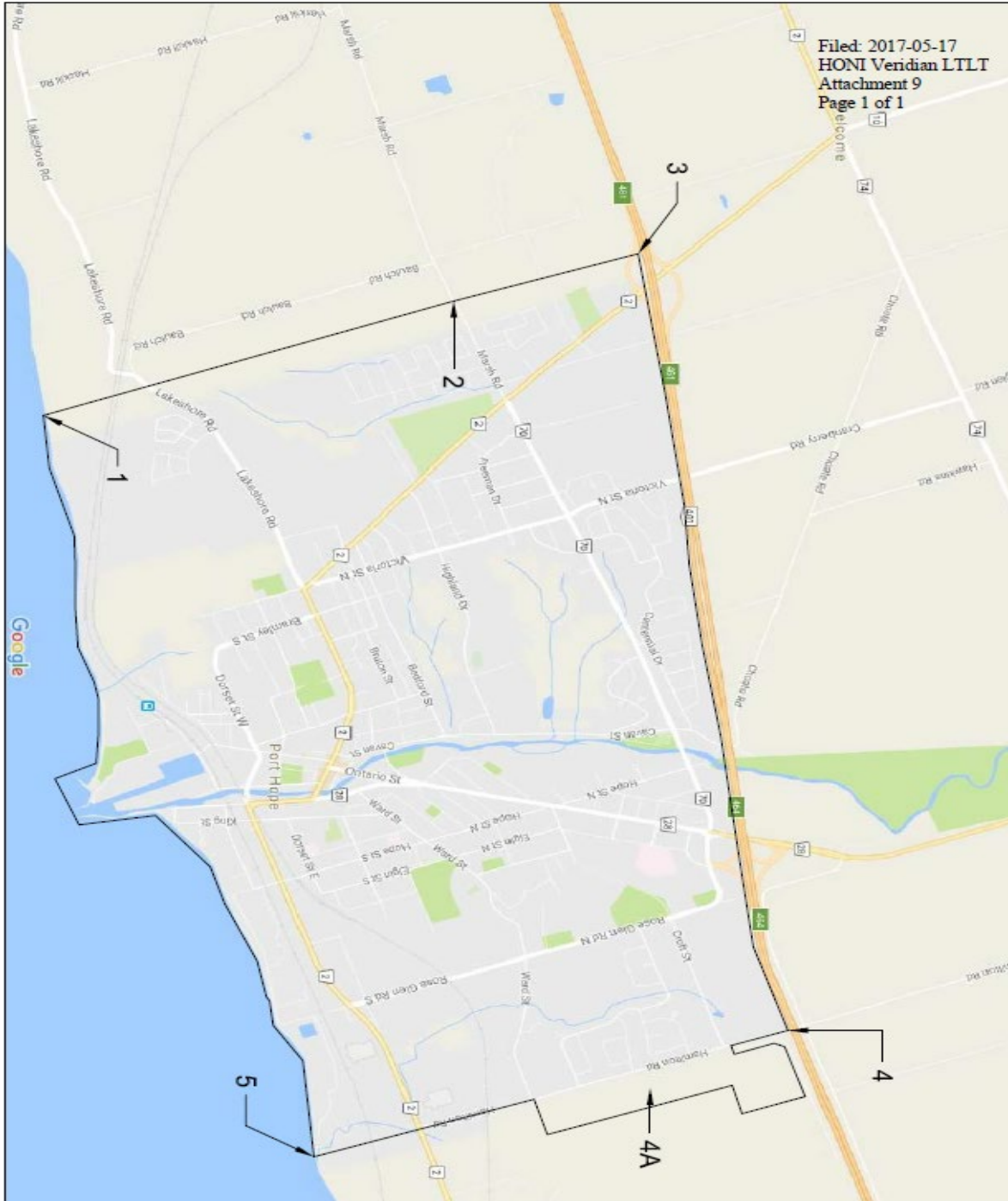


Appendix B

Schedule 1 definition of Distribution Service Area of Elexicon Energy Inc. - Veridian Connections Rate Zone

This Schedule specifies the area in which the Licensee is authorized to distribute and sell electricity in accordance with condition 8.1 of this Licence.

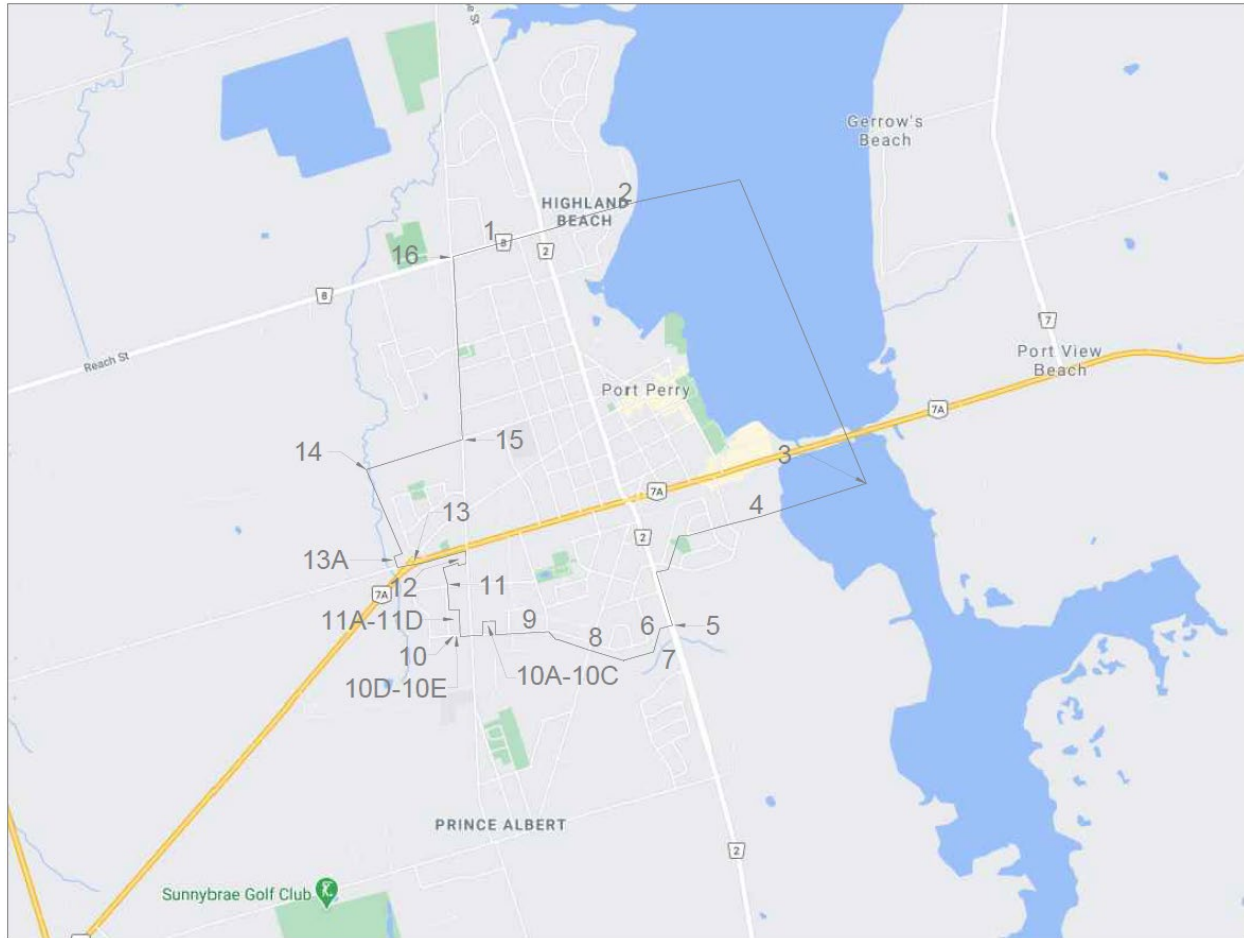
Port Hope Veridian Connection's Rate Zone Service Area



Schedule 1 definition of Distribution Service Area of Elexicon Energy Inc. - Veridian Connections Rate Zone

This Schedule specifies the area in which the Licensee is authorized to distribute and sell electricity in accordance with condition 8.1 of this Licence.

Port Perry (Scugog) Veridian Connection's Rate Zone Service Area



Appendix B

Schedule 1 Definition of Distribution Service Area of Elexicon Energy Inc. - Veridian Connections Rate Zone

This Schedule specifies the area in which the Licensee is authorized to distribute and sell electricity in accordance with condition 8.1 of this Licence.

Uxbridge Veridian Connection's Rate Zone Service Area

